

# **CHARGING ARRANGEMENTS 2021/22**

---

Developer services

## DOCUMENT CONTROL

Version No	Date of Issue	Modifications
1	29 January 2021	First issue

# CONTENTS

## OUR CHARGING ARRANGEMENTS

Introduction .....	1
Purpose .....	3
The market for connection services .....	4

## EXPLANATION OF KEY TERMS

Site specific work and network reinforcement .....	5
Contestable and non-contestable work .....	8
Income offsets .....	9
Upsizing of networks and alternative points of connection .....	10

## SITE SPECIFIC CHARGES – WATER

Introduction .....	11
Pre-planning enquiry .....	12
Point of connection enquiry – Self lay .....	13
Point of connection enquiry and bulk supply offer – NAV .....	14
Service connections .....	16
Water mains .....	30
Water main diversions .....	35

## NETWORK REINFORCEMENT CHARGES – WATER

Introduction .....	38
Water infrastructure charges .....	39

## SITE SPECIFIC CHARGES – WASTEWATER

Introduction .....	40
Pre-planning enquiry .....	41
Point of discharge enquiry and bulk discharge offer – NAV .....	42
Communicating with a public sewer .....	43
Adoption of sewers and lateral drains .....	47
Sewer and lateral drain requisitions .....	50
Sewer diversions .....	52

## NETWORK REINFORCEMENT CHARGES – WASTEWATER

Introduction .....	54
Wastewater infrastructure charges .....	55

# CONTENTS

## OTHER CHARGES

Income offsets .....	57
Security and deposits.....	58
Plans.....	59
Traffic management and road closures.....	60
Revision of quotations and designs .....	61
Abortive construction work, re-inspections and out of hours work .....	62
Pre-occupancy charges .....	65

## FINANCIAL

Methods of payment .....	67
Payment of charges and office opening hours.....	69
Payment and recovery of infrastructure charges .....	70
Scope of Charging Arrangements.....	71

## DERIVATION OF CHARGES AND PAYMENTS

General .....	72
Water infrastructure charges.....	76
Wastewater infrastructure charges .....	78
Pre-occupancy charges .....	80

## APPENDICES

Appendix A - Interpretation and glossary of terms .....	81
Appendix B - Exceptions to upfront fixed charges .....	86
Appendix C - Calculation of infrastructure charges and the relevant multiplier .....	88
Appendix D - Water mains design criteria.....	91
Appendix E - Worked examples .....	92

# OUR CHARGING ARRANGEMENTS

## INTRODUCTION



Northumbrian Water Limited operates in the north east of England where it trades as Northumbrian Water (NW) and in the south east of England, where it trades as Essex & Suffolk Water (ESW). Northumbrian Water provides both water and wastewater services whereas Essex & Suffolk Water provides water supply services only.

The terms used in this document, indicated in bold typeface, are defined within the glossary and definitions pages within the appendices.

This is our **Charging Arrangements** document for this **charging year** and it is intended for use by customers that are involved in property **development** and those that wish to connect existing **properties** to our networks.

The document contains our charges for the “connection services” we provide when anyone applies to connect to our water and/or wastewater network. Typically, connection services include providing **water mains**, **sewers**, water connections and wastewater connections to individual properties, water main and sewer **diversions** and work to reinforce our networks as a consequence of new development.

Our Charging Arrangements also detail the charges and payments that apply when water mains and **communication pipes** are installed by **Self-Lay Providers (SLP)** or **New Appointees (NAV)** and are connected, directly or indirectly, to our network.

The types of customer that will typically use this document will be:

- **Developers** and builders
- Consultants working on behalf of developers in respect of utility provision
- Companies that provide infrastructure for developers e.g. Self-Lay Providers (SLP) and New Appointees (NAV)
- Individuals wishing to connect or re-connect existing or redeveloped properties to our water and wastewater networks

In this document “we” or “us” refers to NW in the north east of England and ESW in the south east. Words in the singular shall include the plural and vice-versa except where the context otherwise requires.

### Value Added Tax (VAT)

All charges published in this scheme exclude VAT unless specified otherwise. VAT will be added to the published charge at the appropriate rate where required.

HM Revenue & Customs (HMRC) plans to introduce a VAT change on 1 March 2021 relating to supplies of construction services. After the implementation date, many supplies of construction services by sub-contractors will be subject to a domestic reverse charge.

## **OUR CHARGING ARRANGEMENTS**

### **INTRODUCTION**



However, HMRC has accepted that this new requirement does not apply to new connection and diversionary works included in water companies' Charging Arrangements because the charges relate to construction, repair or alteration of the company's physical assets used to provide water and wastewater services. Consequently, our charges will be invoiced with VAT, when applicable, in the normal manner.

#### **Wholesale connection charges**

We have considered the amendments to the Wholesale Charging Rules issued by Ofwat on 16 March 2018 and the charges published in this Charging Arrangements document represent the charges we will raise for all of our new connection services. We do not differentiate between household or non-household customers as our charges are based on, and cost reflective of, the work being carried out. The charges quoted in this document therefore represent our Wholesale Connection Charges where applicable.

## OUR CHARGING ARRANGEMENTS PURPOSE



The aim of our Charging Arrangements document is to provide customers with clear and transparent information about the charges and payments relating to connections services.

Our regulator **Ofwat** published **charging rules** in December 2017 (subsequently amended). The rules apply to all English regional water and sewerage companies. One of the requirements rules means that we have published **fixed charges** for the work we carry out in providing connections services.

The benefits of providing fixed charges are that developers, SLPs and NAVs can confidently calculate a reasonable estimate of our charges for the connection services we provide when planning for their new developments. We have included methodologies and worked examples to help customers to estimate the charges and/or payments that apply to **developments**.

In July 2019, Ofwat made changes to the charging rules for new connection services and the **Charges Scheme Rules**. Consequently, all water companies were required to change the way they charge customers that require new connections to their networks from 1 April 2020:

<https://www.ofwat.gov.uk/wp-content/uploads/2019/07/Charges-scheme-rules-from-April-2020.pdf>

We summarised the main changes to the rules in our 2020/21 Charging Arrangement document, which can be found on our webpages:

<https://www.nwl.co.uk/services/developers/our-charges/>

<https://www.eswater.co.uk/services/developers/our-charges/>

One of the key principles underpinning the provision of new water and wastewater network infrastructure for developments is that customers requiring new or replacement assets are liable for payment of the associated costs. Our charges to our customers are reflective of the reasonable costs we incur for the work that we do to provide network infrastructure as a direct consequence of development.

## OUR CHARGING ARRANGEMENTS

### THE MARKET FOR CONNECTION SERVICES



When developers require new water and/or wastewater infrastructure for their developments they can choose who constructs, owns and operates the new assets. Developers can choose the option that best meets their needs. The three options are:

- a) A NAV builds the new infrastructure and either a) arranges for it to be connected to our network(s) or b) develops its own source of water and/or wastewater treatment facilities. The new assets built by the NAV remain in their ownership and, as a licensed water and/or wastewater supplier; they are responsible for the assets' future operation and maintenance.
- b) The developer chooses to construct the network themselves or by employing an accredited contractor to carry out the work on their behalf. Commonly a developer will use a competent drainage contractor to construct sewerage assets and an SLP to construct the new water network. The new networks are ultimately adopted by us under the terms of a legal agreement entered into by the relevant parties. We become the owner of the new networks and are responsible for their operation and maintenance on adoption.
- c) The developer requests that we install the new networks, i.e. they requisition the networks from us. The new properties are connected and we are responsible for the ongoing ownership and operation of the new assets. It is rare for a developer to ask a water company to construct sewerage assets on a new development site, but the option is available to them.

Lloyds Register administers the accreditation scheme for SLPs, known as the Water Industry Registration Scheme (WIRS). A list of WIRS accredited SLPs can be found at

[www.lr.org/wirs](http://www.lr.org/wirs)

To find out more about NAVs and the services they can offer, please visit Ofwat's website

[www.ofwat.gov.uk/regulated-companies/markets/nav-market/](http://www.ofwat.gov.uk/regulated-companies/markets/nav-market/)



## EXPLANATION OF KEY TERMS

# SITE SPECIFIC WORK AND NETWORK REINFORCEMENT



In this section we have explained some key terms that we will use throughout this document.

### Site specific work

**Site specific work** is the term used to describe the work that is required to provide new network infrastructure to specifically serve a new development site. This is the work within the site and up to the nearest practical **point of connection (POC)** to the existing network. It includes the work required to connect any newly laid networks and individual property supplies to our existing networks. Our site specific charges relate to these assets only and exclude the costs of any **network reinforcement** (see below).

Sometimes we may require that **site specific** infrastructure installed is larger than is necessary for a particular development site or phase. This is so that known future developments or phases can be incorporated into our network.

There may also be occasions where we request that the site specific infrastructure is connected to our network at a location that is not the nearest POC, i.e. an **alternative point of connection**.

The way that charges apply to upsizing work and connections at an alternative point of connection is described later in this document on page 10.

### Network reinforcement

When new developments connect to our existing networks they usually increase the demand on our existing water and wastewater networks. From time to time, we need to carry out work on our water and wastewater networks to account for the increased demand that is as a direct consequence of new developments connecting to them. These works, known as network reinforcement, ensure the service to our customers does not fall below our minimum levels of service.

The way that we fund network reinforcement is primarily, but not entirely, through charges known as an **infrastructure charges**. Infrastructure charges are payable in respect of **household** and **non-household** properties where some or all of the water used and the wastewater disposed of is for **domestic purposes**. They are payable when properties are connected for the first time or, in some cases, reconnected to our networks.

If some of the water used and wastewater disposed of is not for domestic purposes, infrastructure charges are only payable in relation to the element that is for domestic purposes. If network reinforcement is required as a consequence of water and/or wastewater that is not for domestic purposes, we recover the reinforcement costs through charges other than infrastructure charges.

# EXPLANATION OF KEY TERMS

## SITE SPECIFIC WORK AND NETWORK REINFORCEMENT



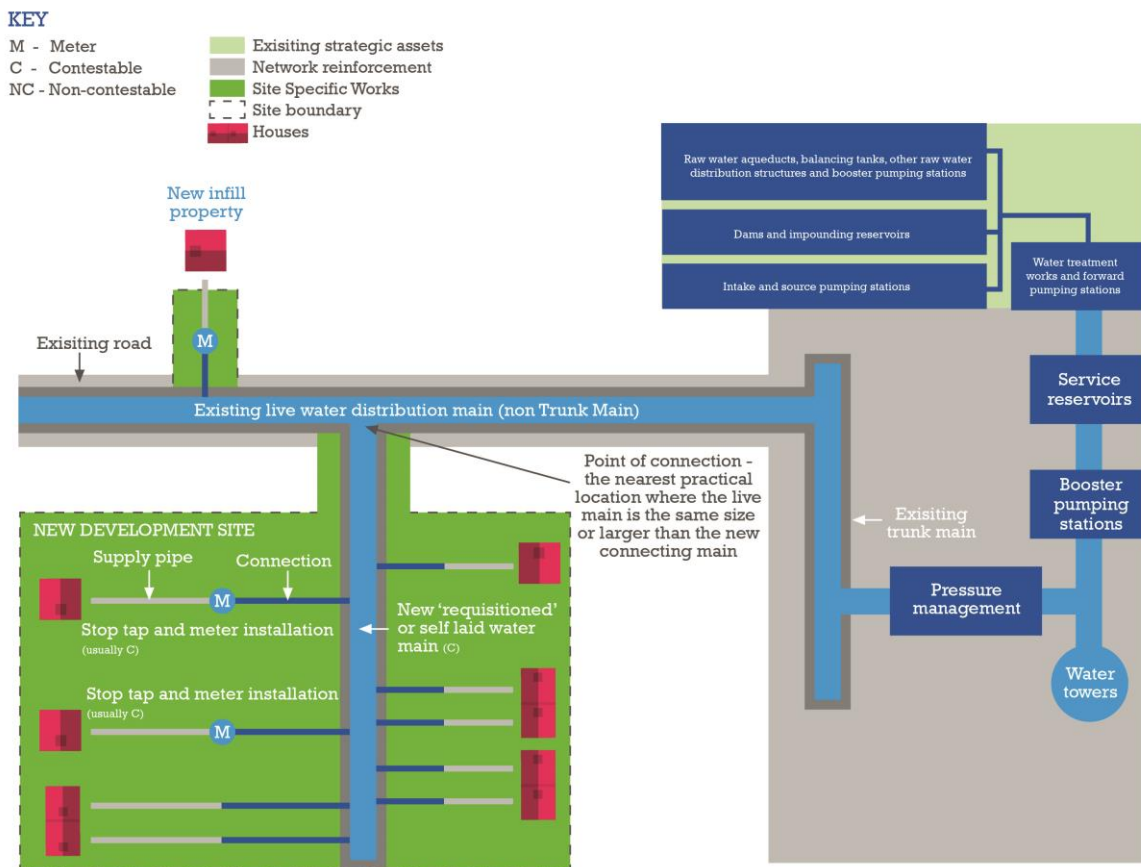
The proportion of network reinforcement required for non-domestic purposes can be charged directly to a developer or NAV.

Infrastructure charges are a contribution made by developers or NAVs that enable us to meet our overall requirement to reinforce our networks to support development. They are distinct from charges relating to site specific work, where the charge has a direct relationship to the cost of the work carried out to specifically serve a particular development.

We have set our infrastructure charges at a level so that we have sufficient funds to invest in our networks to meet the anticipated demand of new developments, for domestic purposes. As a general principle, the vast majority of properties that become connected or, in some cases, reconnected to our network are required to pay infrastructure charges.

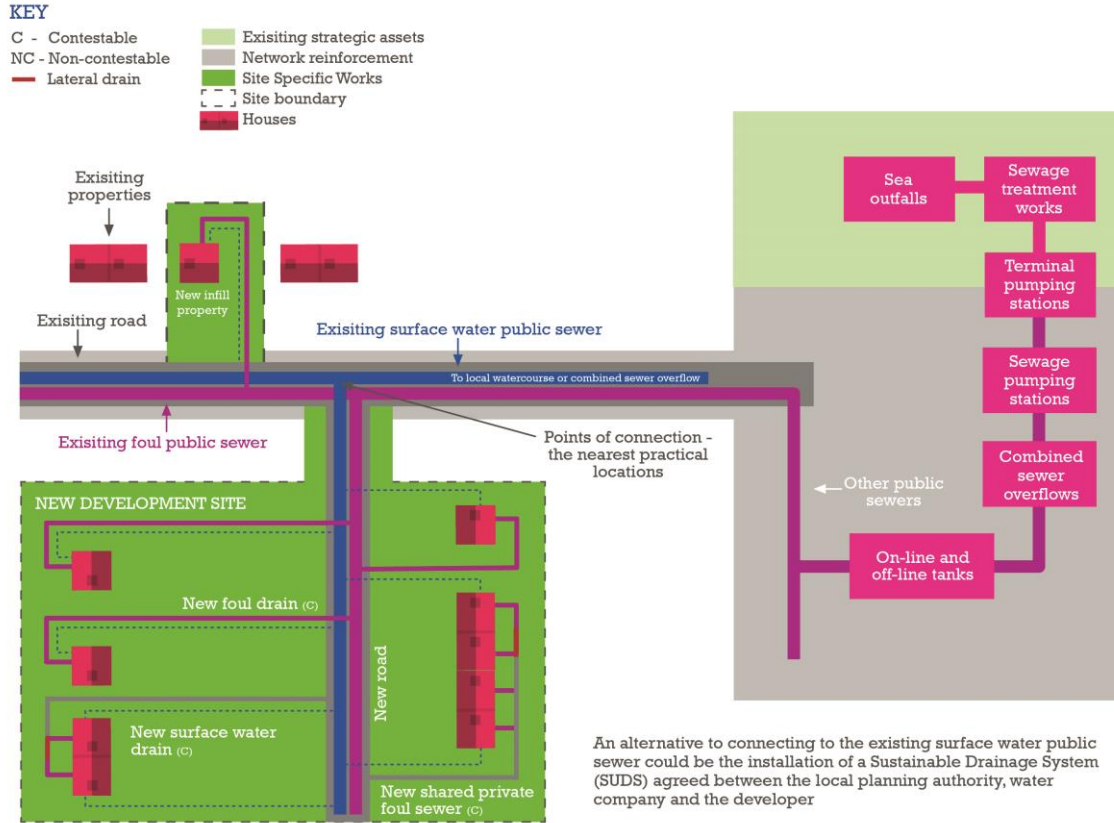
The following diagrams show the assets that are defined as site specific and those assets where infrastructure charges would fund any necessary reinforcement. Where the installation of an asset is contestable work, this is indicated on the diagram. Figure 1 relates to water infrastructure and Figure 2 to wastewater.

**Figure 1 - Water Network**





**Figure 2 - Wastewater Network**



## EXPLANATION OF KEY TERMS

### CONTESTABLE AND NON-CONTESTABLE WORK



#### a) Water

If an SLP or NAV is appointed to install water infrastructure for a development, they are able to carry out the vast majority of the work. The work that SLPs and NAVs can do is known as contestable work. There are some elements of the work that must be carried out by us and this is known as non-contestable work.

Non-contestable work is usually limited to those activities that have the potential to increase operational risk to our existing assets or to reduce the level of service to our existing customers. This could be where a physical intervention may be required, such as valve operation on the network or an interruption to supplies which could affect those customers.

For water networks, contestable work and non-contestable work are defined within the **Water Sector Guidance** which is available on our WaterUK's website.

<https://www.water.org.uk/water-sector-guidance-approved-documents/>

Contestable and non-contestable work in our areas of supply are summarised in our Annual Contestability Summary (ACS), which is available on the following webpages:

<https://www.nwl.co.uk/services/developers/water-services/water-mains/self-lay/>

<https://www.eswater.co.uk/services/developers/water-services/water-mains/self-lay/>

#### b) Wastewater

Most of the work to provide new wastewater networks is contestable work and therefore most developers and NAVs employ a competent drainage contractor to construct new sewers and drains for them.

Our application process provides an opportunity for us to assess a contractor's proposal in advance of any connections being made to the existing wastewater network. On rare occasions we will insist that we carry out the element of work required to connect developers' and NAVs' self-laid sewers and/or drains to our wastewater network i.e., the work becomes non-contestable.

## **EXPLANATION OF KEY TERMS**

### **INCOME OFFSETS**



Up until 31 March 2020, where new water mains were provided for a development, we took into account the future revenue of new properties connected to the new mains. This future revenue was used to fund some or all of the cost of providing the new water mains and is known as an income offset. We made an income offset payment which is an equivalent amount whether the new mains are constructed by us, an SLP or a NAV. Where customers requisitioned sewers from by us, we also provided an income offset.

As a consequence of Ofwat's changes to charging rules, all water companies are required to remove income offsets from the costs of new water mains and requisitioned sewers. They may, however, apply income offsets to infrastructure charges but are not required to do so.

# **EXPLANATION OF KEY TERMS**

## **UPSIZING OF NETWORKS AND ALTERNATIVE POINT OF CONNECTION**



### **Upsizing of networks**

There may be occasions where we require developers, SLPs or NAVs to install new water mains and/or sewers that are larger than is specifically required for their development site. We do this to provide future capacity for other developments that are being planned in the same area.

Where we require customers to do this, our charges will be based on the proportion of the capacity of the new water or wastewater network that is actually required for that development alone. The capacity apportionment will be based on anticipated flows for that development compared to the design capacity of the upsized water or wastewater infrastructure. The cost associated with upsizing the asset to cater for future development will be funded by the infrastructure charges we collect from customers.

### **Alternative point of connection**

There may be occasions where we agree with developers, SLPs or NAVs that new water mains and/or sewers are connected to our existing network at a location that is not the nearest practical point of connection. This approach can provide an alternative to increasing capacity at the location that is defined as the point of connection within this document.

Where we require an alternative point of connection, our charges for connecting the mains and/or sewers will be no more than if connection was made at the nearest practical point of connection. The additional cost associated with connecting at the alternative point of connection will be funded by the infrastructure charges we collect from customers.

## **SITE SPECIFIC CHARGES AND PAYMENTS - WATER INTRODUCTION**



Charges may be different in the Northumbrian region compared with the Essex and Suffolk regions. This reflects the different costs of providing the services in each region.

This section sets out our water charges that include the following:

- Pre-planning enquiry
- Point of connection enquiry
- Bulk supply offers for NAVs
- Service connection charges
- New water mains
- Water main diversions

Although we have provided a number of fixed charges, some of the charges associated with the delivery of water infrastructure fall within the exceptional circumstances as defined in Appendix B.

## SITE SPECIFIC CHARGES AND PAYMENTS - WATER PRE-PLANNING ENQUIRY



Customers are able to enquire about the availability of water network capacity in the initial stages of their development project, typically before a developer submits their application for planning permission with the local authority. Our Pre-Planning Enquiry (PPE) response will:

- Be based on the expected development parameters at the time of application.
- Indicate the nearest point on the existing network of an equivalent size or larger (if the customer has not indicated a preferred point of connection).
- Recommend an alternative or technically preferred point(s) of connection (if one is evident at this early stage). If there are multiple options, we will provide the rationale for any recommended option.
- Indicate how we will review any technical constraints and propose to minimise the impact on the development programme.
- Provide details and indicative costs of any network reinforcement works for developments where water is used for non-domestic purposes.
- Include a plan of our existing water network.
- Specify the validity period of the response.

Charge Item	Charge Unit	NW & ESW
Water pre-planning enquiry	Per application	£147



## SITE SPECIFIC CHARGES AND PAYMENTS - WATER POINT OF CONNECTION ENQUIRY – SELF LAY



Our point of connection enquiry provides relevant information to developers and SLPs that propose to design and/or construct water mains and/or service connections. Before any design work is started, a technical appraisal should be carried out to establish the point(s) on the existing network from which the development can be supplied and whether any network reinforcement is needed for developments that require water for non-domestic purposes. This would apply to some non-household developments.

Our Point of Connection (POC) enquiry response will:

- Confirm that a point of connection is viable where a customer has indicated their preferred location to connect to our network or indicate a suitable point of connection where the customer has not indicated their preference.
- Indicate the status of land ownership at the point of connection (i.e., adopted highway or third party), if known.
- Comment on any special engineering difficulty that may be associated with the existing water mains at the point of connection.
- Indicate any network reinforcement that we will carry out.
- Indicate known risks to our networks within or in land relevant to the development site e.g., the presence of mains, sewers, rising mains, other plant and any easements to determine whether diversionary work or asset protection work may be required.
- Summarise the contestable and non-contestable elements of work relating to the provision of the infrastructure for the development.
- Provide details and indicative costs of any network reinforcement works where water is to be used for non-domestic purposes.
- Provide an estimate of the operational pressures in our water mains at the proposed points of connection.
- Include a plan of our existing water network.
- Specify the validity period of the response.

Charge Item	Charge Unit	NW & ESW
Self-lay water point of connection enquiry	Per application	£172



If a development site is proposed be supplied through water infrastructure constructed, owned and operated by a NAV, we are able to provide the following information:

## Site served status

To provide indication of whether we believe the site is served by us or not

Charge Item	Charge Unit	NW & ESW
NAV site served status enquiry	Per application	£59

## Point of connection and bulk supply offer

Our point of connection and bulk supply offer response will:

- Confirm that a point of connection is viable where a customer has indicated their preferred location to connect to our network or indicate a suitable point of connection where the customer has not indicated their preference.
- Confirm the NAV's bulk supply requirements for the proposed development, including the proposed numbers and types of properties, build rate, water supply peak flow and the annual water consumption.
- Summarise of the contestable and non-contestable elements of work relating to the provision of the infrastructure for the development.
- Include an offer for the non-contestable work we are required to undertake at the point of connection on our existing water network.
- Include a design and an offer for us to deliver the contestable work between the point of connection and the **supply point**, when requested by and paid for by the customer\*.
- Indicate the status of land ownership at the point of connection (i.e., adopted highway or third party), if known.
- Comment on any special engineering difficulty that may be associated with the existing water mains at the point of connection.
- Indicate any network reinforcement that we will carry out.

## SITE SPECIFIC CHARGES AND PAYMENTS - WATER POINT OF CONNECTION & BULK SUPPLY OFFER – NAV



- Provide details and indicative costs of any network reinforcement works where water is to be used for non-domestic purposes.
- Provide details of temporary supply arrangements, if applicable.
- Indicate the water infrastructure charges that are applicable.
- Indicate known risks to our networks within or in land adjacent to the development site e.g., the presence of mains, sewers, rising mains, other plant and any easements to determine whether diversionary work or asset protection work may be required.
- Include an estimate of the operational pressures in our water mains at the proposed point of connection and at the anticipated pressure at the proposed supply point.
- Include a plan of our existing water network.
- Indicate the location of our bulk supply charges and bulk supply agreement on our website.
- Specify the validity period of the response.

Charge Item	Charge Unit	NW & ESW
NAV water point of connection enquiry and bulk supply offer for non-contestable work at the point of connection	Per application	£190
*NAV bulk supply – design and offer for contestable work between the point of connection and supply point	Per application	£98



## Introduction

If developers require a new service connection to connect their property to the **existing water mains** network, work includes the provision of the communication pipe, meter and usually the meter housing. Developers are responsible for providing the private supply pipe infrastructure up to the boundary of the street in which our water main is laid.

For developments comprising of a single property or a small number of properties or buildings, it is very often the case that the new service connections are made to an existing water main, usually in a nearby public highway.

On larger development sites where new water mains are being laid, it is usually the case that the connections are being made within the development site to new mains.

For service connections we have upfront fixed fees and charges relating to:

- Processing applications
- The administration associated with service connections
- Determining **Water Regulations** compliance
- The installation of the service connections, where we are asked to carry out the work.

For some of the elements of work we also offer customers an alternative to the upfront fixed charge, and we will indicate this in the relevant sections of the document.

## SITE SPECIFIC CHARGES - WATER SERVICE CONNECTIONS



### Service connection application fees

#### For connections to existing water mains

The fees and charges include for the following:

- Processing and recording the application and fees
- Acknowledging receipt of the application
- Site visits where required (only for connections being made by us)
- Network capacity assessment
- Preparing and issuing a quotation for the customer

#### a) Where the intention is for the service connections to be self-laid:

Charge Item	Charge Unit	NW & ESW
Self-lay service connection application fee	Per application	£45

#### b) Where the intention is for the service connections to be made by us:

Charge Item	Charge Unit	NW & ESW
Service connection application fee	Per application	£116

For applications that include service connections to **newly laid** water mains, please see the section relating to Water Mains that includes application fees for requisitioned water mains and self-lay water main schemes.



### Service connection administration fees

The administration fees below are applicable where the connections are being made to existing water mains and/or newly laid mains.

The fees and charges include for the following:

- Processing and recording of payments
- Dealing with customer queries and correspondence
- Site visits where required
- Planning and scheduling the installation of the connections (only for connections being made by us)
- Where necessary, the serving of notices on third parties and local authorities
- Provision of a water meter for self-lay connections
- Recording of asset information on completion of the construction
- The drafting and circulation of a **self-lay agreement** (for self-laid services connections only)

For service connections we are asked to provide that are greater than 32 mm in diameter (typically for larger buildings) the fees and charges also include for the additional labour costs associated with:

- Site meetings and dealing with customer queries and correspondence



**Where the intention is for the service connection to be self-laid**

**Legal fees**

Charge Item	Charge Unit	NW & ESW
Self-lay legal fee (provision of a self-lay agreement)	Per application	£58

**Administration fees**

Charge Item	Charge Unit	NW & ESW
Self-lay service connection administration fee	Per connection	£35

**Where the intention is for the service connections to be made by us**

**Administration fees**

Charge Item	Charge Unit	NW & ESW
Service connection administration fee – connection to a newly laid water main	Per connection	£49
Service connection administration fee – connection to an existing water main	Per connection	£165
Service connection administration fee – for a service connection to be made in the same excavation as another service connection	Per connection	£39



**Administration fees associated with meter installation**

**i) Connections with internal meters**

Where any connection is made to a building where there is a requirement to install internal meters to premises (e.g., a block of flats), the following charge applies in addition to the administration charge for the connection to the water main

Charge Item	Charge Unit	NW & ESW
Service connection administration fee – for properties with internal meters	Per meter	£22

**ii) Charges for the provision of meters for SLPs to collect and install**

Meter size (millimetres)	Charge Unit	NW & ESW
15	Per meter	£46
25	Per meter	£46
30	Per meter	£95
40	Per meter	£115
50	Per meter	£151
50/20 combination	Per meter	£470



## SITE SPECIFIC CHARGES - WATER SERVICE CONNECTIONS



### Fees for determining Water Regulations compliance

The fees below are applicable where the connections are self-laid or being made by us.

The fees and charges include for the following:

- Inspections of the supply pipe to determine compliance with Water Regulations (except where compliance is self-certified)
- Processing and recording of Water Regulations self-certification documents

For service connections we are asked to provide that are greater than 32 mm in diameter (typically for larger buildings) the fees and charges also include for the additional labour costs associated with site meetings for Water Regulations inspections

Charge Item	Water Regulations certification	Types of water fittings	Charge Unit	NW & ESW
Connection up to and including 32 mm in diameter	Self-certified	All domestic	Per connection	£29
	Inspection by us at time of connection to a newly laid main	All domestic	Per connection	£29
	Inspection by us	All domestic	Per connection	£66
	Inspection by us	Domestic and some non-domestic	Per connection	£356
Connection greater than 32 mm in diameter	Inspection by us	Primarily domestic	Per connection	£408
	Inspection by us	Domestic and some non-domestic	Per connection	£500



### Service connection construction charges

Our service connection construction charges include for the following:

- Provision and installation of a communication pipe
- Connection of the communication pipe to an existing or newly laid water main
- Connection of the communication pipe to the **supply pipe** that has been laid by a customer
- Provision and installation of meter housings and meters where the communication pipe is up to and including 32 mm in diameter

The charges also include the following where applicable:

- Excavation, backfilling and reinstatement of the ground
- Removal and disposal of any spoil from our excavation
- 2 way traffic lights<sup>1</sup> and local authority permit charges<sup>2</sup>

The charges exclude any other costs associated with traffic management, which are charged separately where they are applicable.

We have provided charges for the following categories of connection:

- Connections to newly laid mains
- Connections to existing mains

We have included charges for polyethylene (PE) and **barrier pipe** connections up to 125mm in diameter. We have provided charges for laying pipes in ground that has been pre-excavated by the customer, **unmade** surfaces and **made-up** surfaces requiring permanent reinstatement.

We have also given a selection of the typical lengths of connections we are normally asked to provide as well as a charge per metre where the required connection exceeds ten metres in length.

---

<sup>1</sup> Fees for 2-way traffic lights are included in our relevant charges for the connection of service connections to existing mains. The cost of hiring, setting up and dismantling of 2-way lights are included.

<sup>2</sup> Local authority permit fees, for the work we are required to do in the highway, are included in our relevant charges for the connection of service connections to water mains.

## SITE SPECIFIC CHARGES - WATER SERVICE CONNECTIONS



Connections to newly laid and existing water mains – where the connection is up to and including 32 mm in diameter

Length (metres)	Surface	NW		ESW	
		PE pipe	Barrier pipe	PE pipe	Barrier pipe
Up to 10 metres	Pre-excavated by customer	£247	£307	£265	£324
Extra per metre		£6	£9	£6	£9
0-2	Unmade	£430	£475	£482	£527
2-5		£445	£498	£586	£639
5-10		£633	£699	£822	£888
Extra per metre		£40	£42	£54	£57
0-2	Made up	£532	£577	£855	£900
2-5		£737	£790	£1,205	£1,258
5-10		£1,181	£1,247	£1,757	£1,823
Extra per metre		£107	£109	£124	£126

Branch connections up to and including 32 mm in diameter where the branch is installed at the same time as another connection and in the same excavation

Length (metres)	Surface	NW		ESW	
		PE pipe	Barrier pipe	PE pipe	Barrier pipe
0-2	Branch connection	£193	£246	£217	£276
0-2	Branch connection to domestic sprinkler	£217	£271	£235	£295

## SITE SPECIFIC CHARGES - WATER SERVICE CONNECTIONS



For service connections that are 50 mm or greater in diameter, to help calculate the total charge, customers will be required to add together the relevant service connection construction charge (in the table below), the relevant meter installation charge (from pages 26 and 27) and for connections of 63 mm diameter and above, the charge for chlorination and pressure testing (from page 28). Some connections may also require traffic management.

### Connections to water mains – where the connection is 50 mm in diameter and above

Diameter (millimetre)	Length (metres)	Surface	NW		ESW	
			PE pipe	Barrier pipe	PE pipe	Barrier pipe
50	Up to 10	Pre-excavated by customer	£287	n/a	£314	n/a
	Extra per metre		£14	n/a	£15	n/a
	0-2	Unmade	£579	n/a	£656	n/a
	2-5		£675	n/a	£812	n/a
	5-10		£913	n/a	£1,163	n/a
	Extra per metre		£59	n/a	£82	n/a
	0-2	Made up	£871	n/a	£1,014	n/a
	2-5		£1,045	n/a	£1,416	n/a
	5-10		£1,482	n/a	£2,082	n/a
	Extra per metre		£109	n/a	£151	n/a
63	Up to 10	Pre-excavated by customer	£303	£380	£331	£407
	Extra per metre		£15	£23	£17	£24
	0-2	Unmade	£613	£717	£674	£777
	2-5		£655	£778	£831	£954
	5-10		£934	£1,095	£1,186	£1,346
	Extra per metre		£61	£70	£83	£92
	0-2	Made up	£924	£1,028	£1,032	£1,136
	2-5		£1,106	£1,229	£1,436	£1,558
	5-10		£1,636	£1,797	£2,104	£2,265
	Extra per metre		£111	£120	£152	£162

Continued on next page

# SITE SPECIFIC CHARGES - WATER SERVICE CONNECTIONS



Diameter (millimetre)	Length (metres)	Surface	NW		ESW		
			PE pipe	Barrier pipe	PE pipe	Barrier pipe	
90	Up to 10	Pre-excavated by customer	£584	£679	£642	£736	
	Extra per metre		£19	£27	£20	£29	
	0-2	Unmade	£1,126	£1,212	£1,278	£1,363	
	2-5		£1,212	£1,320	£1,453	£1,559	
	5-10		£1,482	£1,632	£1,866	£2,014	
	Extra per metre		£67	£76	£92	£101	
	0-2	Made up	£1,481	£1,568	£1,713	£1,798	
	2-5		£1,641	£1,749	£2,135	£2,241	
	5-10		£2,110	£2,261	£2,866	£3,015	
			£117	£128	£162	£173	
	125	Up to 10	Pre-excavated by customer	£661	£778	£723	£840
		Extra per metre		£22	£33	£24	£34
0-2		Unmade	£1,261	£1,368	£1,419	£1,524	
2-5			£1,349	£1,475	£1,599	£1,723	
5-10			£1,627	£1,793	£2,021	£2,184	
Extra per metre			£70	£79	£95	£104	
0-2		Made up	£1,652	£1,758	£1,897	£2,002	
2-5			£1,831	£1,958	£2,351	£2,475	
5-10			£2,351	£2,517	£3,154	£3,317	
Extra per metre			£130	£140	£179	£188	



## Water meter installation charges

### a) Where the intention is for the service connections to be self-laid:

Where an SLP asks us to install meters on a self-laid service connection, the following charges apply for the provision, installation and commissioning of the meter and are conditional on the ground being excavated by the customer before installation, where applicable:

Meter size	Charge unit	NW	ESW
15 mm internal	Per meter	£122	£122
15 mm fitted in chamber installed by SLP	Per meter	£117	£117
25 mm fitted in chamber installed by SLP	Per meter	£122	£122
30 mm	Per meter	£627	£627
40 mm	Per meter	£640	£640
50 mm	Per meter	£1,488	£1,537
50/20 mm combination	Per meter	£1,994	£2,043

In the charges above, any meter that is installed that is greater than 25 mm includes the provision and installation of the meter housing.

### b) Where the meter is to be installed on a service connection that has been installed by us:

The charges in the table on the next page are to be used:

- In conjunction with construction charges for connections greater than 32 mm
- Where there is a requirement to install a meter on an existing service

The fees and charges include for the following:

- Excavation, backfilling and reinstatement of the ground
- Materials
- Construction of a meter chamber where required, and installation of a meter
- Connection of the meter to the service pipe
- Removal and disposal of any spoil from our excavation

## SITE SPECIFIC CHARGES - WATER SERVICE CONNECTIONS



Meter size	Surface	NW	ESW
Internal	n/a	£122	£122
15 mm	Pre-excavated by customer	£193	£217
	Unmade	£218	£230
	Made up	£612	£637
25 mm	Excavated by customer	£197	£222
	Unmade	£224	£236
	Made up	£618	£642
30 mm	Excavated by customer	£609	£609
	Unmade	£1,008	£1,057
	Made up	£1,649	£1,723
40 mm	Pre-excavated by customer	£622	£622
	Unmade	£1,021	£1,070
	Made up	£1,915	£1,988
50 mm	Pre-excavated by customer	£1,470	£1,519
	Unmade	£1,732	£1,805
	Made up	£2,626	£2,723
65 mm	Pre-excavated by customer	£1,311	£1,360
	Unmade	£1,574	£1,647
	Made up	£2,467	£2,555
80 mm	Pre-excavated by customer	£1,615	£1,688
	Unmade	£2,139	£2,261
	Made up	£3,716	£3,887
100 mm	Pre-excavated by customer	£1,651	£1,724
	Unmade	£2,175	£2,297
	Made up	£3,752	£3,923
50/20 mm combination	Pre-excavated by customer	£1,976	£2,025
	Unmade	£2,238	£2,311
	Made up	£3,132	£3,229
50/20 mm combination with flow straightener	Pre-excavated by customer	£2,057	£2,105
	Unmade	£2,319	£2,392
	Made up	£3,212	£3,310
80/20 mm combination	Pre-excavated by customer	£2,271	£2,344
	Unmade	£2,795	£2,917
	Made up	£4,373	£4,543
80/20 mm combination with flow straightener	Pre excavated	£2,369	£2,442
	Unmade	£2,893	£3,015
	Made up	£4,470	£4,641
100/25 mm combination	Pre-excavated by customer	£2,376	£2,449
	Unmade	£2,900	£3,022
	Made up	£4,478	£4,648
100/25 mm combination with flow straightener	Pre-excavated by customer	£2,484	£2,557
	Unmade	£3,008	£3,130
	Made up	£4,585	£4,756

## SITE SPECIFIC CHARGES - WATER SERVICE CONNECTIONS



### Chlorination and pressure testing fees

Where the communication pipe required for a development is 63mm in diameter or above, it must be pressure tested, disinfected and a sample of the water taken.

The fixed fee includes for the following:

- Pressure testing the pipe to ensure that there are no leaks
- Materials
- Chlorination and de-chlorination of the pipe
- Taking of a sample of the water and having it tested at a UKAS accredited laboratory
- Flushing the pipe when the sample results are satisfactory

Charge Item	Charge Unit	NW & ESW
Chlorination and pressure test of a communication pipe	Per test	£266



## SITE SPECIFIC CHARGES - WATER SERVICE CONNECTIONS



### Alternative to the payment of fixed charges for service connections construction

Customers may, rather than paying based on our quotation based upon fixed charges, ask us to calculate the actual costs.

To proceed with this option, we require customers to pay the fixed charges upfront plus an additional non-refundable administration fee. We will calculate the final amount payable by accounting for the costs we have actually incurred in installing the service connection. Customers will be liable to pay the actual costs whether they are less than or more than the fixed charges once costs are reconciled.

Charge Item	Charge Unit	NW & ESW
Additional administration fee – for the calculation of service connection construction costs based on actual costs	Per application	£76



## Introduction

If developers require new water mains for their development, the work involves the provision of the new mains themselves, valves, hydrants, washouts and a connection to the existing network. Occasionally booster stations will be required to increase the pressure of the water in the new network.

For new water mains we have upfront fixed fees and charges relating to:

- Processing applications
- Approving SLP's designs
- Designing the mains, including NAV bulk supplies where requested
- The administration associated with the provision of the new mains
- The construction of the mains, where we are asked to carry out the work

## Water mains application fees

Our application fees and charges include for the following:

- Processing and recording fees
- Acknowledging receipt of the application
- Network capacity assessment (where there is no valid pre-planning (PPE) or point of connection (POC) response)
- Preparing a quotation for a) requisitioned mains and service connections and b) non-contestable work and any contestable work that has been requested for self-laid mains

Charge Item	Charge Unit	NW & ESW	
		Where a valid POC or PPE response exists	Where no valid POC or PPE response exists
Water mains application fee	Per application	£104	£275

## SITE SPECIFIC CHARGES - WATER WATER MAINS



### Water mains design fees

Our design fees and charges include for the following:

- Processing and recording of fees
- Assessment of an SLP's design or
- Providing a design and/or costs where we are asked to do so

Charge Item	Charge Unit	NW & ESW
Mains design approval fee	Per application	£198
Initial mains design fee	Per application including up to 20 properties	£375
Additional mains design fees	Per additional 20 properties (or part thereof)	£68

### Water mains administration fees

Our mains administration fees and charges include for the following, where applicable:

- Processing and recording of payments
- Dealing with customer queries and correspondence
- Site visits where required (for requisitioned mains only)
- Instructing our framework contractor or direct labour to commence work
- Attendance at pre-start meetings
- Recording of asset information on completion of the construction
- Quantity surveying (for requisitioned mains only)
- The vesting of self-laid mains
- The drafting and circulation of an adoption agreement (for self-laid mains only)

Charge Item	Charge Unit	NW & ESW
Requisition mains administration fee	Per application	£448
Self-lay mains administration fee	Per application	£333
Self-lay legal fee (provision of a self-lay agreement)	Per application	£58



### Water mains construction charges

Our water mains construction charges include for the following:

- Construction of water mains and ancillary fittings
- Connection of either a self-laid main or requisitioned main (including a NAV bulk supply) to an existing main
- Materials

The charges also include for the following where applicable:

- Pressure testing, chlorination and sampling of the water
- Excavation, backfilling and reinstatement of the ground
- Removal and disposal of any spoil from our excavation
- 2 way traffic lights<sup>3</sup> and local authority permit charges<sup>4</sup>

The charges exclude any costs associated with road closure required by the local authority, and any costs that fall within the exceptions defined within Appendix B. Charges for road closures can be found in the section entitled “Traffic Management and Road Closures”.

We have provided indicative charges for the following categories of connection:

- The construction of new mains
- The construction of the connection of a self-laid main to our existing mains

We have included charges per metre for polyethylene (PE) and barrier pipe mains up to 355 mm in diameter. We have provided charges for laying pipes in ground pre-excavated by the customer, in unmade ground, **part made** ground and made-up ground.

Customers can estimate the cost of construction of mains by using the table below and referring to the design criteria for new mains within Appendix D. The amount payable for requisitioned mains will be the total construction cost, being the sum of application, administration, design and construction fees.

The payment to us in respect of self-laid mains is the non-contestable work that we do plus any contestable work that we agree to do.

---

<sup>3</sup> Fees for 2-way traffic lights are included in our relevant charges for the connection of newly laid water mains to existing mains. The cost of hiring, setting up and dismantling of 2-way lights are included.

<sup>4</sup> Local authority permit fees, for the work we are required to do in the highway, are included in our relevant charges for the connection of newly laid water mains to existing water mains.

# SITE SPECIFIC CHARGES - WATER

## WATER MAINS



Main diameter (millimetres)	Surface	NW		ESW	
		PE pipe per metre	Barrier pipe per metre	PE pipe per metre	Barrier pipe per metre
63	Pre-excavated by customer	£34	£43	£48	£56
	Unmade	£55	£64	£73	£82
	Part made	£103	£112	£122	£131
	Made up	£147	£155	£198	£207
90	Pre-excavated by customer	£43	£52	£60	£69
	Unmade	£65	£74	£89	£98
	Part made	£115	£125	£136	£145
	Made up	£161	£170	£218	£227
125	Pre-excavated by customer	£47	£56	£68	£78
	Unmade	£69	£78	£100	£110
	Part made	£119	£129	£146	£156
	Made up	£165	£174	£232	£248
180	Pre-excavated by customer	£62	£75	£78	£91
	Unmade	£90	£103	£111	£124
	Part made	£146	£159	£174	£188
	Made up	£199	£212	£267	£280
225	Pre-excavated by customer	£61	£71	£80	£92
	Unmade	£89	£99	£114	£126
	Part made	£145	£155	£200	£212
	Made up	£198	£208	£287	£298
250	Pre-excavated by customer	£84	n/a	£95	n/a
	Unmade	£116	n/a	£134	n/a
	Part made	£184	n/a	£241	n/a
	Made up	£247	n/a	£330	n/a
280	Pre-excavated by customer	£88	£95	£103	£112
	Unmade	£120	£128	£145	£155
	Part made	£187	£195	£267	£277
	Made up	£250	£258	£359	£369
315	Pre-excavated by customer	£91	£101	£110	£123
	Unmade	£123	£133	£156	£169
	Part made	£190	£200	£310	£323
	Made up	£253	£264	£390	£403
355	Pre-excavated by customer	£124	£139	£149	£167
	Unmade	£172	£186	£193	£210
	Part made	£250	£264	£387	£405
	Made up	£324	£339	£464	£481

## SITE SPECIFIC CHARGES - WATER WATER MAINS



### Charges for connecting new self-laid water infrastructure to our existing water mains network

Where an SLP or NAV constructs water infrastructure and brings it to the agreed point of connection, the following charges apply for the work we will carry out to connect the new infrastructure to our existing water mains network.

Charge Item	Charge Unit	NW	ESW
Connection to a main that is up to and including 125 mm in diameter	Per connection	£1,963	£2,634
Connection to a main that is greater than 125 mm in diameter but less than 250 mm in diameter	Per connection	£2,213	£2,945
Connection to a main that is 250 mm in diameter or greater but less than 355 mm in diameter	Per connection	£2,899	£3,902
Connection to a main that 355 mm or greater in diameter	Per connection	£3,571	£4,838



### Introduction

On occasions our existing water mains cross a development site in a location which may impact upon how customers wish to develop their site. We may be able to work with them to slightly amend their site layout, or suitably protect the mains to allow the development to proceed without the need to divert the main. We have provided a deposit amount for this service.

However, if it is clear that customers require an existing water main to be diverted or altered for the purposes of developing a site, the following charges will apply. Whilst the statutory duty to divert the main rests with us, there may be some non-complex situations where laying the pipes for the newly diverted main could be carried out by a SLP or NAV subject to it being wholly within the customer's land and with our approval.

Within our range of options we have included:

- Charges for applying for us to divert the main (subject to it not falling into the range of exemptions contained with Appendix B)
- Charges for us to technically appraise and inspect a mains diversion designed by an SLP

Where an SLP or NAV lays the new mains for the diversionary works, the connections to our existing main would be completed by us.

Our fixed charges have been derived based upon the average cost of providing each element of the work that contributes to the cost of dealing with an application to divert water mains.

Our initial appraisal fee to determine whether a main can be protected to be left in place rather than diverted includes for the following:

- A review of the application with our internal stakeholders to gather the maximum information about the main
- A site survey/meeting to gather more accurate asset location data
- An initial design report with options for the main remaining in place and/or an initial diversionary route

## SITE SPECIFIC CHARGES - WATER WATER MAINS DIVERSIONS



### Water main diversion and protection appraisal application fees

Our water mains diversion application fees include for the following:

- Processing and recording fees
- Acknowledging receipt of the application
- Network capacity assessment
- Providing an estimate of cost for the diversion

Charge Item	Charge Unit	NW & ESW
Water main diversion application fee	Per application	£167
Appraisal deposit (to determine whether an affected main needs to be diverted or protected)	Per application	£1,300

### Water main diversion design fees

Water mains diversion design fees includes for the following:

- Designing the water main diversion in accordance with our design criteria
- Producing a CAD drawing of the water mains and services layout
- Consultation with the customer and internal stakeholders
- Vetting of an SLP's or NAV's proposed design in accordance with the criteria within our self-lay local arrangements document
- Consultation with the SLP or NAV where required
- Corresponding with the SLP or NAV to give approval or otherwise

Charge Item	Charge Unit	NW & ESW
Water main diversion design fee	Per application	£654
Technical assessment fee (where we agree that the design work may be provided by an SLP or NAV)	Per application	£385
Technical assessment site survey fee (if required)	Per hour	£91



## SITE SPECIFIC CHARGES - WATER WATER MAINS DIVERSIONS



### Water mains diversion administration fees

For mains diverted by SLPs or NAVs our fees include for the following:

- Provision of a water main diversion agreement to include for abandonment of the existing main.
- Legal fees

Charge Item	Charge Unit	NW & ESW
Water main diversion legal fee (provision of a standard water main diversion agreement)	Per application	£345
Water main diversion additional legal fees over and above the minimum fee	Per hour	£69
Inspection fee (where some of the diversion work can be delivered by an SLP or NAV)	Per visit	£273

# NETWORK REINFORCEMENT CHARGES - WATER

## INTRODUCTION



Network reinforcement is other work that needs to be carried out in consequence of the site specific work associated with a new development. Occasionally we will be required to carry out network reinforcement work to ensure that a new development does not result in a degradation of service to our other customers. In terms of degradation we mean the service would fall below our company's standard for the relevant service.

Under Ofwat's Charges Scheme Rules, developers contribute towards the capital cost of network reinforcement through infrastructure charges. The cost of providing capacity will be recovered through infrastructure charges which will apply when any property connects to our networks for the first time<sup>5</sup>.

We are required by Ofwat to ensure that our network reinforcement expenditure broadly matches our total infrastructure charge revenue over a five year rolling period. To ensure that we have access to sufficient funding to provide for growth in our areas, we may set our infrastructure charges annually.

---

<sup>5</sup> or reconnects after being disconnected for a period of five years or more



**a) Household properties**

Our water infrastructure charges for this charging year are:

Charge Item	Charge Unit	NW	ESW
Water infrastructure charge	Per house	£65	£40

**b) Non-household properties**

Where connected properties are not houses, the infrastructure charge per property is calculated by considering the anticipated demand for domestic purposes; then relating it to the demand of the equivalent number of houses. To do this we use a formula known as the Relevant Multiplier. Details of the Relevant Multiplier can be found in Appendix C.

**c) Infrastructure charge credits**

In the case of redeveloped sites, we give credit against infrastructure charges where applicable. Credits will apply where former properties on the development site were a) connected to our networks and b) there is evidence, from our billing records, that there has been water consumption in the five years prior to us receiving a valid “connection” application. For more detail on how we calculate infrastructure charge credits please refer to Appendix C.

**d) Water efficiency incentives for new houses**

We offer a discount to customers that design and build houses to promote a lower consumption of water. We will discount the water infrastructure charge if evidence is provided to show a house is to be built to achieve a consumption of no more than 105 litres per person per day.

The level of water efficiency of a property can be derived by using the calculator tool on the following website: <http://www.thewatercalculator.org.uk>

Region	Water infrastructure charge per house	Water efficiency discount	Net amount payable per house
Northumbrian	£65	£65	£0
Essex & Suffolk	£40	£40	£0

## **SITE SPECIFIC CHARGES - WASTEWATER INTRODUCTION**

This section sets out our wastewater charges that include the following:

- Pre-planning enquiry charges
- Point of discharge and bulk discharge offers for NAVs
- Communicating with a public sewer
- Adoption of sewers and lateral drains
- Sewer and lateral drain requisitions
- Sewer diversions

Although we have provided a number of fixed charges, many of the charges associated with the delivery of wastewater infrastructure fall within the exceptional circumstances as defined in Appendix B.

Customers that arrange for the construction of wastewater infrastructure themselves, will only incur charges relating to the issuing of our approval or otherwise. We have published fixed charges for provision of our necessary approval.

Customers can ask us to divert our existing sewerage assets, provide a sewer or lateral drain through our statutory requisitioning powers or ask us to adopt wastewater infrastructure to support their development. Whilst we have published a schedule of fixed charges for pipework up to and including 300 mm in internal diameter associated with the provision of a sewer, lateral drain and a communication with an existing public sewer; we consider that the complexity of providing wastewater infrastructure above this size to fall within exceptional circumstances (Appendix B). In such cases, we will provide customers with a reasonable estimate of our charges; however our final invoice will reflect the actual costs.

We can exercise our statutory powers under section 107 of the Water Industry Act 1991 (WIA) to insist that we carry out the construction of a connection to an existing sewer. Where we do so, we will apply the same published schedule of fixed charges to provide a quotation. This happens in cases where we consider the risk of developers connecting to the sewer to be significant.

## SITE SPECIFIC CHARGES - WASTEWATER PRE-PLANNING ENQUIRY



Before any design work is started, a technical appraisal should be carried out to establish the point(s) on the existing network from which the development can be supplied and whether any network reinforcement is needed for developments that require wastewater services for non-domestic purposes. This would apply to some non-household developments. Where a customer has not selected the point of connection or requires confirmation of their chosen point of connection, we will confirm the feasibility of supplying the proposed development. The PPE response will also include:

- For non-household developments, details of any required off-site works; indicative costs and indicative income offset value (if applicable).
- Information on the current availability of sewage treatment capacity.
- Identification of any of our water and wastewater assets which may require protecting or diverting to provide wastewater services for the site.
- A **viability letter** to confirm whether capacity can be provided by us in line with a customers' proposed development programme and assist in the planning process with the local planning authorities.
- A plan of our existing wastewater network.

Charge Item	Charge Unit	NW
Wastewater pre-planning enquiry (includes viability letter)	Per application	£1,023



If a development site is proposed be served via wastewater infrastructure constructed, owned and operated by a NAV, we are able to provide the following information:

### Site served status

To provide indication of whether we believe the site is served by us or not

Charge Item	Charge Unit	NW
NAV site served status enquiry	Per application	£59

### Point of discharge and bulk discharge offer

Our point of discharge and bulk discharge offer response provides the same information as our wastewater pre-planning enquiry response. In addition our response will:

- Confirm that a point of discharge is viable where a customer has indicated their preferred location to discharge to our network or indicate a suitable point of discharge where the customer has not indicated their preference.
- Confirm the NAV's bulk discharge requirements for the proposed development.
- Indicate any network reinforcement that we will carry out.
- Provide details and indicative costs of any network reinforcement works where wastewater arises from non-domestic use.
- Provide details of temporary discharge arrangements, if applicable.
- Indicate the wastewater infrastructure charges that are applicable.
- Indicate the location of our bulk discharge charges and bulk discharge agreement on our website.
- Specify the validity period of the response.



## Introduction

If customers ask us to construct a new wastewater connection to connect a development to the existing wastewater network, we will connect the drains to the nearest reasonably practicable point. For developments comprising of a single property or a small number of properties/buildings, it is often the case that connections of private and lateral drains are made to an existing public sewer, usually in a nearby public highway. In these circumstances, we will carry out the excavation, backfilling and reinstatement works for the construction of lateral drains and at the point of connection for private drains. Where necessary, we will serve notices on third parties and local authorities so that we can gain access to their land to proceed with our installation. Where traffic management is required for connections made in the highway, we will also make the necessary arrangements.

On larger development sites where new sewers are being laid, it is usually the case that developers choose to do the excavation, backfill and reinstatement themselves as the connections are being made within the development site.

We have published a schedule of fixed charges for wastewater pipework installation up to 300mm in internal diameter and to provide the connection to the existing public sewer that depend upon:

- The connection depth
- Sewer type (gravity/pumped)
- Pipe diameter of private/lateral drains
- Pipe diameter of existing sewer pipe
- Method of connection (e.g. to an existing sewer pipe, existing manhole or new manhole)
- A pipe laying charge per metre
- Surface type (e.g. in a road, in a footpath, unmade)
- Whether we are required or requested to carry out the excavation, backfilling and reinstatement works

Our fixed charges for new wastewater connections and lateral drains do not include for traffic management which are levied when applicable. Please see the section within Other Charges relating to Traffic Management & Road Closures.

We consider schemes involving pipework larger than 300 mm internal diameter to fall within the definition of exceptional circumstances. Please see Appendix B.



## Sewer connection application fees

The application fees below are applicable where the connections are being made directly to existing public sewer or private drainage that in turn discharges to a public sewer.

The fees includes for the following:

- Acknowledging receipt of the application and processing the appropriate fee
- An operational risk assessment (where applicable)
- Issue of decision letter (indirect connection only)

Charge Item	Charge Unit	NW
Sewer connection application fee – direct connection	Per application	£106
Sewer connection application fee – indirect connection (i.e. via an existing private drain/sewer)	Per application	£88

## Sewer connection administration fees

The administration fees below are applicable where the connections are being made directly to an existing public sewer. There are no administration fees for indirect connection applications where the developer carries out the works themselves.

The fees include for the following:

- Processing payments
- Dealing with customer queries and correspondence
- Network capacity assessment
- Issue of an approval letter
- A site visit to inspect the works (where applicable)
- Recording asset information on completion of the installation
- Updating our billing records

Charge Item	Charge Unit	NW
Direct sewer connection administration fee (includes an inspection)	Per application	£201
Sewer connection additional administration over and above that which is included in the fixed fee above.	Per hour (or part thereof)	£46
Charge for additional sewer connection inspections	Per visit	£157





**Sewer connection construction fees**

Where the intention is for the connection to be made by us (including s107 connections), the schedule of fixed charges below cover the construction work in carrying out different methods of connection:

Charge Item	Charge Unit	NW
Connection into existing sewer pipe up to and including 200 mm in diameter (assumes ground is pre-excavated by customer)	Per connection	£411
Connection into existing sewer pipe greater than 200 mm in diameter and up to and including 300 mm in diameter (assumes ground is pre-excavated by customer)	Per connection	£570
Break into an existing sewer manhole where pipe size is up to and including 200 mm in diameter (assumes ground is pre-excavated by customer)	Per connection	£1,504
Break into an existing sewer manhole where pipe size is greater than 200 mm in diameter and up to and including 300 mm in diameter (assumes ground is pre-excavated by customer)	Per connection	£1,617
New manhole up to and including 1.5 m deep	Per connection	£5,560
New manhole greater than 1.5 m deep and up to and including 3 m deep	Per connection	£14,313
New manhole greater than 3 m deep and up to and including 6 m deep	Per connection	£25,564

## SITE SPECIFIC CHARGES - WASTEWATER COMMUNICATING WITH A PUBLIC SEWER



If a customer is only requesting us to construct the connection to the existing public sewer i.e. not the construction of pipework serving the development, there will be a need to use the following table to add two metres of pipework which allows for the pre-excitation of the trench to carry out the works.

Sewer Type	Pipe Depth	Pipe Diameter	Surface	NW (charge/m)
Gravity Sewer	Up to and including 3m	Up to and including 200 mm	Road	£1,386
			Footpath	£882
			Unmade	£347
		Greater than 200 mm and up to and including 300 mm	Road	£1,507
			Footpath	£1,002
			Unmade	£423
Gravity Sewer	Greater than 3m and up to and including 6m	Up to and including 200 mm	Road	£2,243
			Footpath	£1,738
			Unmade	£692
		Greater than 200 mm and up to and including 300 mm	Road	£2,449
			Footpath	£1,945
			Unmade	£770
Pumped Sewer	Up to and including 3m	80mm	Road	£1,398
			Footpath	£894
			Unmade	£345

### Alternative to the payment of fixed charges for wastewater connections and lateral drain construction

Customers may, rather than paying based on our quotation based upon fixed charges, ask us to calculate the actual costs.

To proceed with this option, we require customers to pay the fixed charges upfront plus an additional non-refundable administration fee. We will calculate the final amount payable by accounting for the costs we have actually incurred in making the connection. Customers will be liable to pay the actual costs whether they are less than or more than the fixed charges once costs are reconciled.

Charge Item	Charge Unit	NW
Additional administration fee – for the calculation of wastewater connection and lateral drain construction costs based on actual costs	Per application	£76

# **SITE SPECIFIC CHARGES - WASTEWATER ADOPTION OF SEWERS AND LATERAL DRAINS**



## **Introduction**

If customers offer new wastewater assets for adoption under section 104 of the WIA, they are also required to make an application to connect to the public sewer under section 106 of the WIA.

On receipt of an application, we will technically assess it to ensure the proposals are acceptable and when satisfied that this is the case, we will approve the design and formally offer the developer a section 104 adoption draft agreement. When the developer provides all relevant information we will enter into the adoption agreement with them. On satisfactory completion of the works and full occupation of the development, we will issue a final certificate confirming vesting of the wastewater network.

## **Sewer adoption application fee and initial administration**

The fees include for the following:

- Pre-application discussions
- Acknowledging receipt of the application
- Processing the appropriate application fee
- Initial assessment on the completeness of an application and the provision of an acknowledgement letter
- A full technical appraisal of a sewer adoption design submission
- Advising whether the proposals are acceptable or not
- Calculating our estimation of the construction costs
- Providing the applicant with a schedule for the legal document

The sewer adoption technical assessment fee is inclusive of any previous payments made as part of the same application.

## SITE SPECIFIC CHARGES - WASTEWATER ADOPTION OF SEWERS AND LATERAL DRAINS



### Sewer adoption technical/inspection fee

The fees include for the following:

- Sufficient site inspections and testing for quality control purposes
- Provision of a maintenance certificate
- Completion of a joint inspection and provision of a defects correction list followed by a final inspection
- Completion of a CCTV survey of the sewers
- Issue of a final sewer adoption certificate

For smaller developments we make a minimum charge of £500 to cover all of the items above.

Charge Item	Charge Unit	NW
Sewer adoption application fee (includes initial administration)	Per application	£500
Sewer adoption technical/inspection fee (including administration)	% of value of works	2.5% or £500 minimum
Sewer adoption legal fee (provision of a standard sewer adoption agreement)	Per application	£220
Sewer adoption legal fee for amendment of sewer adoption agreement wording above standard and/or providing additional copies	Per hour (or part thereof)	£69
Sewer adoption – security (if applicable)	% of value of works	10% or £5000 minimum
Pumping station and rising main adoption - security (if applicable)	% of value of works	15%

## SITE SPECIFIC CHARGES - WASTEWATER ADOPTION OF SEWERS AND LATERAL DRAINS



### Lateral drain adoption fees

If customers offer lateral drains for adoption under section 104 of the WIA where they do not form part of a larger development, there is no need to enter into a standard sewer adoption agreement, although the following fees apply:

Charge Item	Charge Unit	NW
Lateral drain adoption application fee (including initial administration)	Per application	£106
Lateral drain adoption technical/inspection fee (including final administration)	Per application	2.5% or £211 minimum
Lateral drain adoption charge for additional administration over and above that which is included in the fixed fee above and re-inspections of sub-standard work	Per hour (or part thereof)	£52

## SITE SPECIFIC CHARGES - WASTEWATER SEWER AND LATERAL DRAIN REQUISITIONS



Due to the great variations in scale and complexity, sewer requisitions fall within the type of scheme where exemptions apply (Appendix B).

Where customers require a requisitioned sewer or lateral drain from us there are four key stages in delivering a project to provide the sewer.

- a) Project initiation
- b) Investigate and define
- c) Design and construct
- d) Commissioning

Throughout the project we will carry out the following activities which will be included in the final amount customers will pay:

- Project management
- Framework consultancy to investigate and define the project
- Third party landowner engagement
- Legal and estates notices
- Complete detailed design and cost evaluation
- Complete the construction of the sewer
- Agree compensation and way leave payments

We require a fixed deposit to initiate the project to provide customers with an estimated charge for the “investigate and define” stage.

### Sewer requisition fees and charges

Charge Item	Charge Unit	NW
Sewer and lateral drain requisition application fee	Per application	No charge
Sewer requisition administration deposit	Per application	£5,000
Lateral drain requisition administration fee	Per application	£308
Sewer/lateral drain construction charge	% of value of works	100%

## SITE SPECIFIC CHARGES - WASTEWATER SEWER AND LATERAL DRAIN REQUISITIONS



There will be some non-complex situations where a sewer requisition can be delivered without the detailed process above, for example:

- Crossing a narrow strip of unregistered land
- A lateral drain from an individual property

To enable customers to estimate the amount they will pay; we have included some fixed charges for sewers up to 300 mm in internal diameter associated with the provision of a requisitioned sewer or lateral drain.

Sewer Type	Pipe Depth	Pipe Diameter	Surface	NW (Cost/m)
Gravity Sewer	Up to and including 3 m	Up to and including 200 mm	Road	£1,386
			Footpath	£882
			Unmade	£347
		Greater than 200 mm and up to and including 300 mm	Road	£1,507
			Footpath	£1,002
			Unmade	£423
Gravity Sewer	Greater than 3 m and up to and including 6m	Up to and including 200 mm	Road	£2,243
			Footpath	£1,738
			Unmade	£692
		Greater than 200 mm and up and including 300 mm	Road	£2,449
			Footpath	£1,945
			Unmade	£770
Pumped Sewer	Up to and including 3 m	80 mm	Road	£1,398
			Footpath	£894
			Unmade	£345

### Provision of a sewage pumping station

Charge Item	Charge Unit	NW
Supply and install type 1 sewage pumping station – pass forward flow less than 2.5 litres per second and 10 metres head	Per unit	£135,300

## SITE SPECIFIC CHARGES - WASTEWATER SEWER DIVERSIONS



If customers require an existing sewer to be diverted or altered for the purposes of a development, the charges below will apply. Options are available depending on the technical complexity of the work and whether or not the works are contained within the customer's land.

### Minor sewer alteration fees

This covers the diversion of lateral drains and sewers for pipework, up to 225 mm in internal diameter and less than 1.05m deep, which are located within back or side gardens of existing properties. We will not require a formal diversion agreement for this type of work.

Charge Item	Charge Unit	NW
Sewer diversion application fee	Per application	£107
Sewer diversion technical assessment/inspection fee for minor alteration	% of value of our estimate for the works	10% or minimum of £252

### Major sewer diversion fees

- a) Where a formal agreement is entered into and we allow the customer to undertake the diversion.
- b) Where a formal agreement is entered into, but we will undertake the diversion, when:
  - The diversion is to pass through third party land and or;
  - The sewer is critical infrastructure of strategic importance.

Where we provide the diversion, we will undertake the feasibility study, design, supervision and construction of the diversion. This means we will provide customers with a quotation based on our best estimate, but our final invoice will reflect the costs we reasonably incurred in providing the diversion, which could be more or less. The published schedule of fixed rates for sewers up to 300 mm in internal diameter and sewer connections, can be used to derive a reasonable estimate of charges for the pipe laying and connection elements of the works prior to making an application.

The customer must use our s106 connection procedure and any s185 diversion legal agreement must be signed before turning flows at either end of the diversion.



## SITE SPECIFIC CHARGES - WASTEWATER SEWER DIVERSIONS



Charge Item	Charge Unit	NW
Sewer diversion application fee	Per application	£500
Sewer diversion appraisal fee (to determine whether or not the critical sewer is to be diverted or protected)	Per application	£5,000
Sewer diversion technical assessment fee (where the design for the diversion is provided by the developer)	% of value of our estimate for the works	10%
Sewer diversion legal fee (provision of a standard sewer diversion agreement)	Per application	£345
Sewer diversion additional legal fees over and above the minimum fee	Per hour	£69
Sewer diversion - security (if applicable)	% of value of our estimate for the works	100% or £5,000 minimum
Sewer diversion - construction charge	% of value of actual cost of the works	100%
Decommissioning redundant sewers following a diversion – application fee	Per application	£107
Decommissioning - legal fees	Fixed fee	£207
Decommissioning costs	% of value of actual cost of the works	100%

The sewer diversion technical assessment fee is inclusive of any payments already made as part of the same application.



Network reinforcement is other work that needs to be carried out in consequence of the site specific work associated with a new development. Occasionally we will be required to carry out network reinforcement work to ensure that a new development does not result in a degradation of service to our other customers. In terms of degradation we mean the service would fall below our company's standard for the relevant service.

Under Ofwat's Charges Scheme Rules, developers will contribute towards the capital cost of network reinforcement through infrastructure charges. The cost of providing capacity will be recovered through infrastructure charges which will apply when any property connects to our networks for the first time<sup>6</sup>.

We are required by Ofwat to ensure that our network reinforcement expenditure broadly matches our total infrastructure charge revenue over a five year rolling period. To ensure that we have access to sufficient funding to provide for growth in our areas, we may set our infrastructure charges annually.

---

<sup>6</sup> or reconnects after being disconnected for a period of five years or more



a) **Household Properties**

Our wastewater infrastructure charges for this charging year are:

Charge Item	Charge Unit	NW	ESW
Wastewater infrastructure charge	Per house	£235	n/a <sup>7</sup>

b) **Non-household Properties**

Where connected properties are not houses, the infrastructure charge per property is calculated by considering the anticipated demand for domestic purposes; then relating it to the demand to the equivalent number of houses. To do this we use a formula known as the Relevant Multiplier. Details of the Relevant Multiplier can be found in Appendix C.

c) **Infrastructure Charge Credits**

In the case of redeveloped sites, we give credit against infrastructure charges where applicable. Credits will apply where former properties on the development site were a) connected to our networks and b) there is evidence, from our billing records, that there has been foul sewage discharged in the five years prior us receiving a valid “connection” application. For more detail on how we calculate infrastructure charge credits please refer to Appendix C.

---

<sup>7</sup> Where Essex & Suffolk Water is the water undertaker, the relevant sewerage undertaker’s wastewater infrastructure charges are payable where new properties are connected to their networks, when applicable.



d) **Incentives for sustainable drainage solutions**

We offer a discount to customers that design and build properties that drain wastewater away from our existing wastewater networks. We discount the wastewater infrastructure charge on the following basis:

Drainage arrangements	Wastewater infrastructure charge per house	Sustainable drainage discount	Net amount payable per house
No surface water drains to an existing public sewer	£235	£185	£50
No foul sewage drains to an existing public sewer	£235	£50	£185
No surface water and no foul sewage drains to an existing public sewer	£235	£0	£0

We will also apply the discount where wastewater drains to a recently adopted public sewer that has been specifically designed to serve further phases of development. This is conditional upon the newly adopted sewer not being connected to the existing wastewater network.

## OTHER CHARGES INCOME OFFSETS



As a consequence of Ofwat's requirements in the Charges Scheme Rules, all water companies are required to remove income offsets from the costs of new water mains and sewers with effect from 1 April 2020. They may however, apply income offsets to infrastructure charges but are not required to do so.

Our income offset amounts applied to infrastructure charges are:

Item	Unit	NW	ESW
Income offset – water	Per house	£0	£0
Income offset - wastewater	Per house	£0	n/a

## OTHER CHARGES SECURITY & DEPOSITS



For certain activities we require a security prior to commencing work.

Charge Item	Charge Unit	NW	ESW
Deposit to commence major water main diversion scheme	Fixed fee	£1,300	£1,300
Deposit to commence major sewer diversion scheme	Fixed fee	£5,000	n/a
Deposit to commence sewer requisition scheme	Fixed fee	£5,000	n/a
Surety for sewers under sewer adoption agreement. (Can be in the form of a bond of surety or a cash bond)	Percentage of construction cost	10%	n/a
Surety for sewers under sewer adoption agreement with Sewage Pumping Station. (Can be in the form of a bond of surety or a cash bond)	Percentage of construction cost	15%	n/a
Surety for sewers under sewer diversion agreement. (Can be in the form of a bond of surety or a cash bond)	Percentage of construction cost	Initial 100% but reduces to 10% on completion	n/a
Surety for self-laid water mains	n/a	Not required	Not required

## OTHER CHARGES PLANS



### Initial plan enquiries

Where customers are proposing a development and require a copy of our asset records, we will provide plans, in pdf format, showing water and wastewater networks at no charge.

To request plans

For the NW area please contact [developmentenquiries@nwl.co.uk](mailto:developmentenquiries@nwl.co.uk)

For the ESW area please contact [developerservicesouth@eswater.co.uk](mailto:developerservicesouth@eswater.co.uk)

Charge Item	Charge Unit	NW & ESW
Extract of water and/or wastewater network map in .pdf format	Per map	£0

If customers require a wastewater map and ESW is the water supplier in the area, they should contact the relevant sewerage undertaker.

## OTHER CHARGES

### TRAFFIC MANAGEMENT AND ROAD CLOSURES



Where we are requested to construct a new water main, water service connection, sewer connection, a new sewer or lateral drain there will be occasions where we require traffic management to enable us to complete the works and keep our workforce, other road users and members of the public safe.

Where additional costs are payable as a result of compliance with Traffic Management Act 2004, these will be payable in addition to our fixed charges where they are not already included.

In some extreme circumstances the connection can only be completed by putting in place a full road closure. This is often a decision made by the local highway authority and we must comply with their statutory requirements and processes, while providing them with up to three months' notice. Our traffic management and road closure charges include for the following:

- Site visits and meetings with the highway authority
- Provision of drawings
- Local authority fees for permits and advertising
- Information signage
- Letter drops to notify affected customers
- Fees for cessation of parking bays and provision of temporary bus stops
- The provision and maintenance of the traffic management scheme including cones, barriers and traffic lights

Charge Item	Charge Unit	NW	ESW
2 - way temporary traffic lights	Per week or part thereof	£162	£162
3 or 4 - way temporary traffic lights	Per week or part thereof	£363	£363
Traffic light suspension	Per week or part thereof	£209	£209
Footpath closure	Per closure	£1,763	£2,421
Lane closure (speed limit up to and including 40 mph)	Per closure	£172	£172
Lane closure (speed limit greater than 40 mph)	Per closure	£501	£501
Full road closure	Per closure	£1,763	£2,421
Bus stop suspension	Per week or part thereof	£284	£284
Pedestrian crossing set up (2 head)	Per week or part thereof	£209	£209
Parking bay suspension	Per week or part thereof	£78	£99



## OTHER CHARGES

### REVISION OF QUOTATIONS AND DESIGNS



The following fees apply when we are required to carry out additional work as a consequence of customers' development plans changing.

Charge Item	Charge Unit	NW & ESW
Revision of a valid service connection/abandonment quotation	Per revision	£38
Revision of a water mains design and/or quotation (price includes 1 hour of design/re-pricing)	Per revision	£147
Additional fee for the revision of a water mains design and/or quotation	Per additional hour of design (or part thereof)	£51
Fee for the refund of charges relating to the revision or cancellation of a valid water mains/service connection/abandonment quotation	Per hour of administration (or part thereof)	£44

Where a customer has accepted a quotation from us but advises us they are no longer proceeding with work relevant to that quotation, we will issue a refund subject to:

- Deducting the relevant fees above
- Deducting the charges and fees relating to the costs we have incurred up to time when we are advised work is no longer proceeding

## OTHER CHARGES

### ABORTIVE CONSTRUCTION WORK, RE-INSPECTIONS AND OUT OF HOURS WORK



#### Abortive construction work

The attendance to carry out the construction of water mains and/or service connections is on a date agreed with the customer. On occasions where we are unable to complete the work for reasons related to circumstances on the development site an abortive charge is due.

Typical reasons for abortive work would include, but is not limited to:

- Trenches have not been excavated by the customer to allow the construction of the requested service connection or main
- The presence of another contractor occupying the same working area
- We deem that the working area is unsafe for us to complete our works
- Vehicles or materials are obstructing the working area that cannot be moved within a reasonable time
- The request for mains is cancelled less than two working days before they are due to be installed
- The request for service connections is cancelled less than one working day before they are due to be installed
- A building's plumbing has not been configured to enable us to install internal meters

#### a) Water service connection work

Our charges include for:

- Our framework contractor's abortive travel and time costs
- Our technicians' abortive travel and time costs
- Our additional administration and labour costs to reschedule the works
- Amendments to permit charges (for connections to existing mains only)

Charge Item	Charge Unit	NW & ESW
Abortive service connection charge - newly laid mains	Per visit	£147
Abortive service connection charge - existing mains	Per visit	£195
Charge for a technician re-visit	Per visit	£98

## OTHER CHARGES

### ABORTIVE CONSTRUCTION WORK, RE-INSPECTIONS AND OUT OF HOURS WORK



#### b) Water mains work

Our charge includes for:

- Our framework contractor's abortive travel and time costs
- The cost of the labour and plant needed to lay the mains which cannot be redeployed at short notice
- Our additional administration and labour costs to reschedule the works
- Additional visits over and above those specified in our mains requisition proposal

Charge Item	Charge Unit	NW	ESW
Abortive mains visit charge	Per visit	£700	£800

#### Water Regulations re-inspection fees

Where applicable, our service connection administration fees include for one Water Regulations inspection. Where there is a requirement to re-inspect a supply pipe and excavation, the following charges apply:

Charge Item	Charge Unit	NW & ESW
Water Regulations re-inspection fee – supply pipe and excavation	Per visit	£72

## OTHER CHARGES

### ABORTIVE CONSTRUCTION WORK, RE-INSPECTIONS AND OUT OF HOURS WORK



#### Out of hours work – service connections and mains construction

There may be occasions where customers ask or third parties require that connections be completed outside of normal working hours. Typically this would be before 08:00 or after 16:00 Monday to Friday or at any time on a Saturday or Sunday. We will use reasonable endeavours to accommodate customers' requests.

Work is charged for at a premium rate in the event that we are able to fulfil such a request or we must comply with a third party's requirement. The charge that we make reflects the average additional labour costs that we incur as a result of the work being carried out outside of normal working hours. It also includes the additional work we undertake to organise, plan and co-ordinate the work in advance of it taking place.

Charge Item	Charge Unit	NW	ESW
Out of hours working for service connections and mains construction	Per hour per construction crew	£76	£83

## OTHER CHARGES

### PRE-OCCUPANCY CHARGES



Our pre-occupancy charge is a fixed charge for the water and sewerage services we provide whilst properties are being developed. It covers the income that is due from developers and builders (“developers”) prior to the occupancy, by others, of any building developers have constructed or converted.

Developers use water and benefit from some aspects of our sewerage service during the lifecycle of a development. In most cases, larger development sites are provided with a metered temporary supply from a nearby water main. Whilst we are satisfied that we were able to charge developers for temporary supplies, the pre-occupancy charge provides a mechanism to charge where other connections are made to our network. Developers also use water drawn from individual communication pipes connected to newly laid and existing mains around a development site. Typically, the water is used to water the gardens of new housing plots and washing down surfaces.

Whilst the development is being built, we are required to operate and maintain the existing mains serving the development, the new mains and connections on site and to maintain each new building’s water meter. We also take readings from the water meters once they have been installed and collect and dispose of rainfall falling on highways (in the NW area).

The fixed pre-occupancy fee only applies to developments where the buildings are household properties. It applies to both newly constructed buildings and where new properties are created due to conversion. We are satisfied that we are able to recover the charges due to us from non-household developments through metering of consumption.

Charge Item	Charge Unit	NW	ESW
Pre-occupancy charge for water and drainage services used by developers prior to household properties being occupied (water only in ESW)	Per house	£32	£21

One pre-occupancy charge will be applied for every new permanent meter that is installed and is payable at the same time that developers pay for a new service connection or an SLP advises us they are to install a connection. However, if a temporary supply has been installed and it is due to be converted to a permanent supply, we will not apply a pre-occupancy charge in respect of that particular connection (see below).

#### a) Temporary Supplies that are made into a permanent supply

If a developer requires a temporary supply, but wishes to ultimately convert this to a permanent supply, they will need to indicate their intention to do so in their application. In such a case, no pre-occupancy charge will apply in respect of that particular temporary service connection.

## **OTHER CHARGES**

### **PRE-OCCUPANCY CHARGES**



#### **b) Using an adjacent existing supply for building purposes**

This situation typically relates to developments of single or a small number of buildings and there is an existing metered supply very close to the location of the development. The developer may request to use this existing supply to provide water for construction of the new properties.



**Northumbrian region**

Post	By cheque or postal order sent to:  Northumbrian Water Limited, Business Income Group, PO Box 400, Durham DH1 9WF
	Cheques should be crossed and made payable to “Northumbrian Water Limited”
	Please write your address and quotation reference on the back
	Postdated cheques are not acceptable
	Please do not send cash through the post
Debit/Credit Card	We accept debit card and credit card (Visa and MasterCard only) payments
	Please have your card details to hand to make payment
	For the payment of application fees by credit /debit card in the NW region please contact the Developer Services Team on 0345 6094639. For the payment of all other fees and charges in the NW region please call 0845 8500514.
BACS	For the payment of fees and charges by BACS please use the following bank details:  National Westminster Bank, PO Box 1PY, Grey Street, Newcastle upon Tyne NE99 1PY  Name of Account: Northumbrian Water Sort Code: 62-17-28 Account Number: 00000000 (Head Office Collection Account) Payment Ref: Your quotation reference



**Essex & Suffolk region**

Post	By cheque or postal order sent to:  Essex & Suffolk Water, PO Box 969, Chelmsford, Essex CM2 0XL
	Cheques should be crossed and made payable to "Essex & Suffolk Water"
	Please write your address and quotation reference on the back and return with the quotation counterfoil
	Postdated cheques are not acceptable
	Please do not send cash through the post
Debit/Credit Card	We accept debit card and credit card (Visa and MasterCard only) payments
	Please have your card details to hand to make payment
	For the payment of fees and charges by credit /debit card in the ESW region please contact the Developer Services Team on 0345 6094638.
BACS	For the payment of fees and charges by BACS please use the following bank details:  National Westminster Bank, PO Box 1PY, Grey Street, Newcastle upon Tyne NE99 1PY  Name of Account: Northumbrian Water Sort Code: 62-17-28 Account Number: 00000000 (Head Office Collection Account) Payment Ref: Your quotation reference
	To help us to locate your payment please contact us with the amount paid, date of payment, sort code, account number. Email address: <a href="mailto:developerservicessouth@eswater.co.uk">developerservicessouth@eswater.co.uk</a> Fax: 01268 664802 Post: PO Box 969, Chelmsford CM2 0XL



## **FINANCIAL**

# **PAYMENT OF CHARGES AND OFFICE OPENING HOURS**



### **Payment of fees and charges**

- (1) For payments made by debit or credit card there will be no additional charge.
- (2) We reserve the right to recover bank charges and administrative costs resulting from invalid or dishonoured cheques, standing orders, credit cards or direct debits.
- (3) When payment is made in foreign currency, the exchange rate applicable will be that on the day of receipt of payment. Any shortfall or benefit will be debited or credited to the customer's account accordingly. Commission charges will be deducted from the amount paid.
- (4) Interest on late payment – we reserve the right to claim interest pursuant to the "Late Payment of Commercial Debts Act 1998" in respect of its non-household customers.

Administration fees are non-refundable in the event that service connections do not proceed to the construction phase.

### **Opening hours for making payments**

Northumbrian - Monday to Friday 8.00 am to 5.00 pm.

Essex & Suffolk – Monday to Thursday 8.00 am to 5.00 pm, Friday 8.00 am to 4.45 pm.

# FINANCIAL PAYMENT AND RECOVERY OF INFRASTRUCTURE CHARGES



## Payment of infrastructure charges

Subject to the paragraph below, water and wastewater infrastructure charges are due and immediately payable to us at the time the relevant connection is made.

In the case of the water connection or wastewater connection of a building or part of a building which is occupied as a house immediately before the connection is made, the relevant charge shall be paid in full, within 30 days after the connection is made; and a supply is available.

The person liable to pay the water infrastructure charge or the wastewater infrastructure charge shall be:

- a) The person requesting the relevant connection to be made, the person making the relevant connection (other than on behalf of us) or the person on whose behalf the relevant connection was requested or made, or;
- b) If the relevant connection is made without our prior agreement, the person making such connection, the person on whose behalf the relevant connection was made or the person using the services provided thereby.

## Recovery of Infrastructure Charges

We may demand and recover from that person, or from the occupier of each house subject to the agreement, water and/or wastewater infrastructure charges in respect of each house , where:

- a) a person who has received a demand, or undertaken to pay water and/or wastewater infrastructure charges in respect of two or more houses subject to a **common billing agreement** fails to pay them, or any part of them, within 14 days of the date of connection, or;
- b) A common billing agreement is terminated otherwise than in accordance with its terms by the person who has undertaken to pay charges under it;



- (1) These Charging Arrangements are made by Northumbrian Water Limited (NWL) under the provisions of the Water Industry Act 1991.
- (2) They set out the charges made by NWL for services relating to new connections to the water and wastewater network, in the course of carrying out its functions as a water and sewage disposal undertaker under its Instrument of Appointment made by the Secretary of State for the Environment.
- (3) These Charging Arrangements set out NWL's charges, terms and conditions applicable for the charging year 2021/22.
- (4) This Scheme shall come into effect on 1 April 2021 and shall remain in force until revoked, amended or modified by NWL.
- (5) For similar information relating to previous years, reference should be made to the Charges Schemes of the year concerned.
- (6) NWL acts as a water and sewerage undertaker in two separate regions of England. The areas served and the services provided are:
  - (a) The "Northumbrian Water" (NW) region in North East England
    - (i) Water and sewerage services are provided across the region, except for a) an area around Hartlepool where water services are provided by Hartlepool Water b) small areas to the west of the region where United Utilities is the water and/or sewerage undertaker c) small areas to the south of the region where Yorkshire Water Services is the water undertaker d) where a NAV is the appointed undertaker.
    - (ii) For water charges for customers served by Hartlepool Water, reference should be made to their Charging Arrangements.
    - (iii) For water and sewerage charges for customers served by United Utilities, reference should be made to their Charging Arrangements.
    - (iv) For water charges for customers served by Yorkshire Water Services, reference should be made to their Charging Arrangements.
  - (b) The "Essex & Suffolk Water" (ESW) region in South East England
    - (i) Water only services are provided in areas of Essex, Suffolk, Norfolk and Greater London except where a NAV is the appointed undertaker.
    - (ii) Sewerage services in these areas are provided by either Anglian Water Services Limited or Thames Water Utilities Limited. For charges related to these sewerage services reference should be made to respective Charging Arrangements.
    - (iii) ESW collects sewerage service charges including wastewater infrastructure charges on behalf of and as agents for Thames Water Utilities Limited within parts of ESW.
- (7) The provisions of this document apply to both operating regions, unless specifically stated otherwise, for example in relation to the level of charge.
- (8) These Charging Arrangements as well as other leaflets and information are published on our websites, at the addresses given below, or on request by contacting us.
  - Northumbrian Water - [www.nwl.co.uk](http://www.nwl.co.uk)
  - Essex & Suffolk Water - [www.eswater.co.uk](http://www.eswater.co.uk)

## DERIVATION OF CHARGES & PAYMENTS GENERAL



Most of our fixed charges can be put into one of four broad categories, these are:

- Application fees
- Design fees
- Construction fees
- Administration fees

Every fixed charge includes for a number of tasks. These tasks are set out in the various sections of the Charging Arrangements document and are made up of a number of cost components which together total the fixed charge.

There are 4 costs components:

**Labour** – this is calculated based on the average labour costs we incur in respect of the tasks described and includes travel time where applicable

**Contractor** - this is calculated based on the contractor's schedule of rates and the average time taken to complete the tasks described.

**Materials** – this is the average cost of job specific materials and consumables required to complete the described tasks.

**Plant and equipment** – this is the average cost of non-consumables such as vehicles, tools and machinery required to complete the described tasks.

# DERIVATION OF CHARGES & PAYMENTS GENERAL



## Application fees

Tasks	Cost Component			
	Labour	Contractors	Materials	Plant/ Equipment
Processing and recording application and fees	✓		✓	
Acknowledging receipt of application	✓		✓	
Visits to site where required	✓		✓	✓
Preparing a quotation for a requisition	✓		✓	
Providing an estimated cost for a diversion	✓		✓	
Network capacity assessment	✓		✓	
Issue of a decision letter	✓		✓	
Operational risk assessment	✓		✓	

## Design fees

Tasks	Cost Component			
	Labour	Contractors	Materials	Plant/ Equipment
Processing and recording application and fees	✓		✓	
Assessing of an SLP or developer's design	✓		✓	
Acknowledging receipt of application	✓		✓	
Visits to site where required	✓		✓	✓
Preparing a quotation	✓		✓	
Providing a design where we are asked to do so	✓		✓	
Revision of designs where developers' proposals change	✓		✓	
Network capacity assessment	✓		✓	
Issue of a decision letter	✓		✓	
Operational risk assessment	✓		✓	

# DERIVATION OF CHARGES & PAYMENTS GENERAL



## Administration fees

Tasks	Cost Component			
	Labour	Contractors	Materials	Plant/ Equipment
Processing and recording of payments	✓		✓	
Dealing with customer queries and correspondence	✓		✓	
Network Capacity Assessment (service connections)	✓		✓	
Visits to site (for non self-lay connections or requisitioned mains)	✓		✓	✓
Preparing a draft adoption agreements	✓		✓	
Planning and scheduling the construction of the connections (for non-self-lay connections only)	✓		✓	
Where necessary the serving of notices on third parties and local authorities	✓		✓	
Quantity Surveying	✓	✓	✓	
Recording of asset information on completion of the construction	✓		✓	
Operational risk assessment	✓		✓	
Calculation of service connection construction costs based on actual costs	✓		✓	
Determining Water Regulations compliance	✓			



### Construction charges

Tasks	Cost Component			
	Labour	Contractors	Materials	Plant/ Equipment
Construction of the new assets	✓	✓	✓	✓
Connection of the new assets we have constructed to our existing network	✓	✓	✓	✓
Connection of new assets that have been self-laid by the customer	✓	✓	✓	✓
Excavation, backfill and reinstatement of the ground where we have carried out construction	✓	✓	✓	✓
Removal and disposal of any spoil from our excavation	✓	✓	✓	✓
Inspection and testing of assets constructed by us	✓	✓	✓	✓
Traffic management	✓	✓	✓	✓

Construction costs account for around 91% of the overall cost of requisitioned water mains in the Northumbrian region and 92% in Essex & Suffolk. Much of the construction works we carry out for customers in relation to new development is delivered by our framework partners. The framework partners were successful, via a competitive tendering process in the open marketplace that was conducted in full compliance with The Utilities Contract Regulations.

## DERIVATION OF CHARGES & PAYMENTS

### WATER INFRASTRUCTURE CHARGES



Our charges have been derived based upon a forward looking assessment of our water network reinforcement needs to support new development. This includes providing additional capacity to ensure that we are able to provide water to new homes in terms of sufficient volume and pressure. We must also ensure that there is no adverse impact upon these levels of service experienced by our existing customers as a consequence of development.

Network reinforcement includes for increasing the capacity of pipes, booster stations and service reservoirs. It specifically excludes investment to improve water resources, reservoirs, boreholes and water treatment works.

Accurately predicting the actual timing, location and build out rates for new development can be difficult so we have taken a balanced risk-based approach using our experience of the development market. Importantly our assessment uses data regarding actual sites within the development pipeline and the results of detailed network analysis using our library of models.

In preparation for the publication of our 2018/19 Charging Arrangements, we carried out an exercise to calculate our infrastructure charges. Our calculation was based upon the anticipated average annual network reinforcement needs for the period from 1 April 2018 to 31 March 2023. We assumed the following in terms of housing delivery:

- 7,800 new properties will be connected each year within the north east
- 5,400 new properties will be connected each year to the Essex and Suffolk network

Water infrastructure charges will be used to fund network reinforcement to provide additional capacity for all sites requiring water for domestic purposes. We used a wide range of data sources on future development to identify areas where network reinforcement schemes will be required. We have then estimated the total cost of the provision of new infrastructure. Where we are replacing existing water networks or carrying out refurbishment of water pumping stations in areas of high growth we have included a percentage allowance for growth to future proof them. That calculation is based upon the relevant percentage increase in future housing when compared to the existing number of connected houses.

In terms of housing delivery we have used a variety of data sources which include:

- Our Water Resources Management Plan
- Office of National Statistics data
- Pre-development enquiries
- Local Plan data
- Planning approvals
- NAV applications



## **DERIVATION OF CHARGES & PAYMENTS**

### **WATER INFRASTRUCTURE CHARGES**



Before we published our 2018/19 Charging Arrangements, we had a good sense of the most likely location of development over the next five years and through our modelling an equally good understanding of those areas with network reinforcement requirements.

In terms of actual housing delivery, our assumption was that annual build rates will be approximately 70% of that within the local plans and we used this as our default where capacity is needed only after so many houses are completed rather than at the actual commencement of the development.

Since 1 April 2018 we have been monitoring our expected network reinforcement costs. If the current trend continues we will require less income than originally forecast to fund reinforcement work up to 31 March 2023 than we first anticipated. Consequently, we have recalculated our water infrastructure charges such that reduced charges will apply from 1 April 2021.

## **DERIVATION OF CHARGES & PAYMENTS**

### **WASTEWATER INFRASTRUCTURE CHARGES**



Our charges have been derived based upon a forward looking assessment of wastewater network reinforcement needs to support new development. This includes providing additional capacity to prevent flooding from our networks and ensuring continued compliance with permits for sewage pumping stations and combined sewer overflows to protect the natural environment. It specifically excludes investment to increase capacity at waste water treatment works.

Accurately predicting the actual timing, location and build out rates for new development can be difficult so we have taken a balanced risk-based approach using our experience of the development market in the north east. Importantly our assessment uses data regarding actual sites within the development pipeline and capacity factors from our library of drainage area models.

In preparation for the publication of our 2018/19 Charging Arrangements, we carried out an exercise to calculate our infrastructure charges. Our calculation was based upon the anticipated average annual network reinforcement needs for the period from 1 April 2018 to 31 March 2023. We calculated our infrastructure charge based upon the average annual network reinforcement needs for the period from 1 April 2018 to 31 March 2023. We have also assumed that on average 8,000 new direct or indirect wastewater connections would be made each year.

Wastewater infrastructure charges will include for network reinforcement to provide additional capacity for the connection of foul flows. It also includes for the connection of surface water from development sites providing that the developer has satisfied the Lead Local Flood Authority (LLFA) requirements relating to surface water management through the planning process. In particular we would expect as a minimum that there has been a full assessment of the hierarchy of preference for the connection of surface water contained with Part H of the Building Regulations. In addition requests for the provision of capacity for the connection of surface water into wastewater networks should be in strict accordance with both local and national planning policy.

In calculating our infrastructure charge we have assumed that:

- Developers will continue to work with planning authorities and lead local flood authorities to “separate, minimise and control” surface water and seek to achieve the most sustainable run-off destination.
- Where brownfield sites are to be redeveloped and there are no separation opportunities; surface water discharge rates shall be reduced to a minimum of 50% of the run-off in the site’s previously developed state. Where a LLFA imposes a greater reduction this will be the figure we use to increase capacity.

## **DERIVATION OF CHARGES & PAYMENTS**

### **WASTEWATER INFRASTRUCTURE CHARGES**



- Where a greenfield development site comes forward and it is demonstrated that connection to a sewer is the only surface water discharge option, flows shall be limited to the equivalent greenfield run-off figure agreed with the LLFA through the planning approval process.
- As the assessment of surface water from developments of ten or fewer houses is currently outside the remit of the surface water planning duties of the LLFAs we require developers of these smaller sites to consult with us prior to the submission of any planning application to agree the most appropriate run-off destination and discharge rates.

We have used these broad principles alongside a number of data sources on future development to identify a range of wastewater network reinforcement schemes. We have then estimated the total cost of the provision of new infrastructure. Where we are carrying out refurbishment of our sewage pumping stations in areas of high growth we have included a percentage allowance for growth to future proof the station. That calculation is based upon the relevant percentage increase in future housing when compared to the existing number of connected houses.

Since 1 April 2018 we have been monitoring our expected network reinforcement costs. If the current trend continues we will require less income than originally forecast to fund reinforcement work up to 31 March 2023 than we first anticipated. Therefore, we reduced our wastewater infrastructure charges with effect from 1 April 2020 and the charge will remain unchanged from 1 April 2021.

## DERIVATION OF CHARGES & PAYMENTS

### PRE-OCCUPANCY CHARGES



Our pre-occupancy charge is a fixed charge for the water and sewerage services we provide whilst properties are being developed. It covers the income that is due from developers and builders (“developers”) prior to the occupancy, by others, of any building developers have constructed or converted.

The pre-occupancy charge recovers the average costs of:

- the water used from connections, other than the temporary supply connections
- the labour for maintaining and reading the meter
- the labour for operating and maintaining the new mains and communication pipes
- collecting and disposing of rainfall falling on highways (NW only)

We have undertaken detailed analysis of the actual consumption from around 500 individual new service connections across a representative sample of ten development sites. During the exercise we also identified the average period of time between a meter being installed for each connection and the new occupier moving into each property.

We used the analysis to calculate the cost of the water that was used during the construction of each new **household property** in the sample. This was based upon the consumption reported for each new connection by either the developer or the new occupier at the time of occupation.

We also calculated an additional fixed charge for maintaining and reading meters, operating and maintaining the new mains and services network and a contribution towards the cost of draining highways. In all cases, the basis of our calculations has been from the date when a new water service connection is made until the date when the new occupier moves in.



Words in the singular shall include the plural and vice versa except where the context otherwise requires.

**“alternative point of connection”** means location on our water or sewerage network other than the **point of connection**.

**“asset payment”** means a payment made up to and including 31 March 2020 to a Developer or Self Lay Provider (SLP) for providing a self-laid water main under the terms of a self-lay agreement. It contributes towards the cost of the self-laid main in a similar manner that the income offset contributes to the cost of a main we are asked to install.

**“barrier pipe”** is pipe used to construct water networks to prevent potable water quality being compromised by the ingress of chemicals from **contaminated land**

**“bath”** includes a whirlpool bath and a Jacuzzi;

**“Charging Arrangements”** means this document.

**“charging rules”** means Ofwat’s “Charging Rules for New Connection Services (English Undertakers)”, published in December 2017 and subsequently amended.

**“Charges Scheme Rules”** Ofwat’s “Charges Scheme Rules” published in December 2017 and subsequently amended.

**“charging year”** means a calendar year running from 1 April each year to 31 March in the following year.

**“common billing agreement”** means an agreement between us and any other person under which that person has undertaken to pay, on terms agreed between them, charges for water supply or sewerage services, or both, in respect of two or more properties which have a common supply pipe and which, in any case where that agreement relates to one of those services only, are also subject to a similar agreement for common billing between that person and the undertaker providing the other service.

**“communication pipe”** means any part of a Service Pipe which we are legally required to construct or an SLP can construct. It consists of a pipe laid from an existing or newly laid Water Main to the boundary of a property, including a meter housing and stop valve.

**“contaminated land”** means any land that includes soil, rock and groundwater that may contain chemical contaminants that pose a risk to potable water quality.

**“connected property”** means any property which benefits from or is:

- (a) receiving a supply of water or;
- (b) occupied by a person having the use of or right to use or benefit of facilities (whether or not for the benefit of the property) in connection with our water supply function or;
- (c) drained by a sewer or drain connecting either directly or through an intermediate sewer or drain with a public sewer or sewage treatment works provided by us or;
- (d) occupied by persons having the use of or right to use or benefit of facilities (whether or not for the benefit of the property) which drain to a sewer or drain so connecting.



“**connection charges**” means charges that will be imposed by that undertaker for work carried out by it in accordance with the duties (or rights) created by the following provisions of the Water Industry Act 1991: section 45(1) (connection with water main); section 46(1) (ancillary works for purposes of making a domestic connection); section 98(1A) (provision of lateral drains); section 101B (construction of lateral drains following construction of a public sewer) or section 107(1) (right of undertakers to make communication with public sewer)

“**contestable work**” means work or services that either we or persons other than us may do or provide. In the case of new water assets, contestable work is usually carried out by SLPs and for new wastewater assets by competent drainage contractors working on behalf of Developers

“**developer**” means any person or business which is responsible for a Development, or the developing of a property or properties.

“**development**” means premises on which there are buildings, or where there are proposals to construct buildings, and which require connection with, and/or modification of, existing water or sewerage infrastructure.

“**diversion charges**” means the charges imposed by an undertaker pursuant to section 185(5) of the Water Industry Act 1991

“**domestic purposes**” in relation to a supply of water to any premises or in relation to the drainage of premises has the same meaning as in Sections 218 and 98 of the Water Industry Act 1991 respectively.

“**existing main**” means a main that was in operation before development commenced

“**fixed charges**” mean charges set for a given charging year which are fixed in amount or which are calculated by reference to a predetermined methodology set out our Charging Arrangements, the application of which allows calculation at the outset of the total amount owing in that charging year in respect of the charges in question. Such charges are to be fixed for a charging year.

“**house**” means any building or part of a building that is occupied as a private dwelling house or which, if unoccupied, is likely to be so occupied and, accordingly, includes a flat.

“**household appliance**” means an appliance (including a dishwasher, a washing machine and waste disposal unit) in a house and “communal or commercial appliance” means an appliance (including a dishwasher, a washing machine and a waste disposal unit) elsewhere than in a house (including in communal facilities);

“**household premises**” and “**household property**” means premises in which, or in any part of which, a person has his home and the principal use of the premises is as a home.

For mixed-use premises where the principal use of the premises is in question; the premises will be defined as non-household where both the household part of the premises is dependent in some way upon the non-household part and the premises are liable for business rates or exempt from business rates.

“**income offset**” is defined in the Charges Scheme Rules and means a sum of money offset against Infrastructure Charges in recognition of revenue likely to be received by the relevant undertaker in future years for the provision of:

- (a) supplies of water to the premises connected to the new Water Main; or



(b) sewerage services to the premises connected to the new Sewer and “income offsetting” shall be construed accordingly

“**infrastructure charges**” means the charge applicable for first time connection of premises, or for the redevelopment of premises previously connected, to a public water supply or to a public sewer for domestic purposes. When such premises are connected, costs are incurred in extending the local network. These costs are met by developers and by customers in such premises.

“**lateral drain**” means

(a) the part of a drain which runs from the curtilage of a building (or buildings or yards within the same curtilage) to the sewer with which the drain communicates or is to communicate; or

(b) the part of a drain being considered for adoption by us<sup>4</sup>

“**made-up**” is a term used to describe the surface of the ground that has a solid surface and requires permanent reinstatement such as a tarmac road or a paved footpath

“**network reinforcement**” refers to work other than site specific work, as defined below to provide or modify such other:

i. Water mains and such tanks, service reservoirs and pumping stations, or

ii. Sewers and such pumping stations as is necessary in consequence of the site specific installation or connection of water mains, service pipes, public sewers and lateral drains. It also includes the additional capacity in any earlier water main or sewer that is required as a consequence of the provision or connection of a new main or sewer.

“**New Appointee**” means a company holding an appointment as a relevant undertaker where the conditions of that appointment limit the charges that can be fixed under a charges scheme by reference to the charges fixed by one or more other relevant undertakers.

“**newly laid main**” means, in respect of a development site, a main that did not exist prior to the development commencing and has been constructed specifically to provide water supplies to building within the development site

“**non-contestable work**” means work or services that only we (or an agent acting on our behalf) can do or provide.

“**non-household premises**” and “**non-household property**” means all premises which are not household premises.

“**Ofwat**” is the body responsible for economic regulation of the water and sewerage industry in England and Wales.

“**part made**” is a term used to describe the surface on a road, track or footpath where the surface does not consist of road metal e.g. the surface consists of crushed rock or broken stone.

“**point of connection**” (POC) means the nearest practical location where the existing water main or sewer is the same size or larger than the new connecting main or sewer.

---

<sup>4</sup> under section 102 or section 104 of the Water Industry Act 1991



“**PPE**” means a pre-planning enquiry response

“**pre-excavated**” means where the developer or its agents carries out work excavate the ground prior to us carrying out our work, such as installing e.g. water main, service connection, lateral drain etc.

“**premises**” includes any part of a building that is intended to be occupied as a separate unit

“**property**” means the hereditament or if there is no hereditament it is land, any interest in land or any easement or right in, on, under or over land;

“**public sewer**” means a sewer vested in us.

“**relevant multiplier**” means a number (which may be one or more or less than one) calculated in the manner set out within Appendix C of these Charging Arrangements.

“**requisition**” is a term used when a person or persons request that we lay a new water main, sewer or lateral drain for them under the terms of the Water Industry Act 1991.

“**requisition charges**” means work carried out by an undertaker in accordance with the duties imposed by section 41(1) (provision of requisitioned water main) and section 98(1) (provision of requisitioned public sewer) of the Water Industry Act 1991.

“**self-laid water main**” means a water main that is provided by another party other than us under the terms of a self lay agreement.

“**self lay agreement**” means a legal agreement that is entered into between us, Developers, SLPs and affected landowners in relation to water mains that are constructed or being constructed, usually by a Self Lay Provider, and offered for adoption to us<sup>5</sup>

“**Self Lay Provider**” (SLP) means an organisation that can carry out work to install water network assets, with the prior approval of a water undertaker. Most SLPs are accredited under the Water Industry Registration Scheme (WIRS) which is recognised by all water undertakers.

“**service pipe**” means the part of a pipe which is, or is to be, connected with a Water Main for supplying water from that main to any premises

“**sewer**” includes all sewers and drains<sup>6</sup> that are used for the drainage of buildings and yards appurtenant to buildings.

“**sewerage connection**” has the same meaning as **wastewater connection**

“**sewerage infrastructure charge**” means the same as wastewater infrastructure charge;

“**site specific**” refers to work on, or the provision of, water or sewerage structures or facilities located on a Development as well as work to provide and connect a requested water main, sewer, communication pipe or lateral drain on, to or in the immediate vicinity of, the development and “**site specific work**” shall be construed accordingly.

“**supply point**” is the point at the interface between our water network and the network which is (or is proposed to be) owned and operated by a NAV.

---

<sup>5</sup> Made in accordance with section 51A of Water Industry Act 1991

<sup>6</sup> not being drains within the meaning given by section 219(1) of the Water Industry Act 1991





“**supply pipe**” means the part of the **service pipe** that is not the **communication pipe**.

“**undertaker**” means a water undertaker or sewerage undertaker.

“**unmade**” is a term used to describe the ground and its surface, where both are soft e.g. in the case of a field, grassed area or a verge.

“**viability letter**” is a letter to confirm whether wastewater network and wastewater treatment capacity can be provided by us in line with the customers proposed development programme. This is intended to reduce the need for Local Planning Authorities to put a phasing condition on developments where we are able to support the development or able to deliver any necessary network reinforcement in line with the customers’ programme.

“**wastewater connection**” means connection, either directly or through an intermediate sewer or drain, to a public sewer of premises, which term shall include any premise or any newly formed premise even if that premise is part of a previous premise that was connected to a sewer, which have never at any previous time been connected to a sewer or the drainage for household purposes of those premises by NWL or its appointed agents or by any other authority or body which at that time provided sewerage services in the course of carrying out functions under any enactment; and has the same meaning as **sewerage connection**

“**wastewater infrastructure charge**” means the charge for first time sewerage connection or for the redevelopment of premises previously having a sewerage connection and has the same meaning as **sewerage infrastructure charge**

“**water connection**” means connection, either directly or through an intermediate pipe, to a water supply of premises, which term shall include any premise or any newly-formed premise even if that premise is part of a previous premise that was supplied with water, which have never at any previous time been connected to a supply of water provided for household purposes by NWL or by any other authority or body which at that time provided supplies of water in the course of carrying out functions under any enactment;

“**Water Industry Registration Scheme**” (WIRS) is a scheme recognised by water undertakers that provides accreditation for Self Lay Providers. The scheme is administered by Lloyds Register.

“**water infrastructure charge**” means the charge for first time water connection or for the redevelopment of premises previously having a water connection

“**water main**” means any pipe, not being a pipe for the time being vested in a person other than the undertaker, which is used or to be used by a water undertaker or licensed water supplier for the purpose of making a general supply of water available to customers or potential customers of the undertaker or water supply licensee, as distinct from for the purpose of providing a supply to particular customers. This definition includes tunnels or conduits which serve as a pipe and any accessories for the pipe.

“**Water Regulations**” means the Water Supply (Water Fittings) Regulations 1999

“**Water Sector Guidance**” is the document entitled “Water Sector Guidance in relation to the adoption of self-laid assets by Water Companies in England”



Ofwat's charging rules require water companies *“to provide for the option of upfront fixed charges in respect of any work carried out by the undertaker”*.

So for many of our connections services we have published upfront fixed charges for work that we will carry out. The following water industry guidance on exceptions to upfront fixed charges has been written by WaterUK, the trade body representing water companies:

#### WaterUK Guidance

Due to the nature of connections work, there are circumstances where the cost incurred by water companies is affected by external factors. These external factors may be outside of the immediate knowledge or control of the water company and, in a limited set of exceptional circumstances, could lead to significant cost variance. For this reason, Ofwat has agreed that companies are not required to provide fixed upfront charges in respect of the following:

- Diversion works (see s185 of the Water Industry Act), and;
- Water and sewerage infrastructure work requested by the developer (see s41 and s98 of the Water Industry Act) where “it would be unreasonable to expect an undertaker (i.e. water company) to do so”.

For standard water and sewerage connections no such exception applies and these must therefore be subject to fixed charges.

In principle, having consulted stakeholders, water companies consider that in the following circumstances, it may not be reasonable for them to provide an upfront fixed charge for the work:

- a) The technical complexity of the work is high or the type of work required is bespoke or carried out infrequently, or;
- b) Third parties can legitimately recover their costs from companies and there is not a reasonable level of certainty of those costs in advance of connection work being undertaken, or;
- c) Third parties have rights to protect their assets or interests in a way that affects the construction method. The third parties' requirements are unknown upfront, or;
- d) The work is to be carried out on or close to land with particular environmental, historical or archaeological characteristics. These characteristics mean that specific measures are required during construction or reinstatement. The details of these measures may not be fully defined in advance of construction.

## APPENDICES

### APPENDIX B – EXCEPTIONS TO UPFRONT FIXED CHARGES



Where the above circumstances occur, companies will be unable to provide a fixed upfront charge for the entire works, and should provide a budget estimate comprising a mixture of:

- Indicative or estimated charges for the elements of works affected by the circumstances above, and;
- Fixed upfront charges for the elements of the work where there is sufficient certainty and it is reasonable to do so.

Water companies anticipate that there will be occasions where providing an indicative estimate is not possible or where the estimate will not meet the degree of confidence desired by the customer. In such cases, the parties will need to decide how to proceed.

#### **Further information**

On occasions we mention in our Charging Arrangements that there are some activities where we are unable to provide are upfront fixed charges for all or some of the elements of the work.

In circumstances such as b, c and d in WaterUK's guidance, the requirements and rights of third parties can have a significant influence on the cost of the work. Our "Code of Practice on Pipe laying" is available on request and provides customers with information about, amongst other things, the rights that third parties have when we propose to lay pipes in or close to land they have an interest in.

## APPENDICES

### APPENDIX C – CALCULATING INFRASTRUCTURE CHARGES AND THE RELEVANT MULTIPLIER



Subject to the following paragraphs, the maximum water infrastructure charge payable for a house shall be the standard water infrastructure and the maximum wastewater infrastructure charge payable for a house shall be the standard wastewater infrastructure charge.

As described earlier in this document, the standard water infrastructure charges can be reduced where the water efficiency incentive discount applies and the standard wastewater infrastructure charges can be reduced where the sustainable drainage incentive discount applies.

The standard water and wastewater infrastructure charges shall be multiplied by the relevant multiplier for premises that consist of a house or houses subject to a common billing agreement or premises that do not consist of a house or houses and to which water is provided by a supply pipe with a diameter larger than the standard size adopted by NWL for a house. Our standard supply pipe size is currently 25 mm outside diameter.

#### Calculating Infrastructure Charges

- a) For development sites that were previously undeveloped:

The total amount of water infrastructure charges, X that will apply is

$X = (A - W) + B$ , where

- A. Equal to the number of new houses
- B. The number of non-household premises multiplied by the aggregate of the relevant multipliers for all those premises
- W. The discount amount for any water efficiency solutions (as applicable)

The total amount of wastewater infrastructure charges, X that will apply is

$X = (A + B) - S$ , where

- A. Equal to the number of new houses
- B. The number of non-household premises multiplied by the aggregate of the relevant multipliers for all those premises
- S. The discount amount for any sustainable drainage solutions (as applicable)

- b) For development sites that are redeveloped

Where a site is developed or redeveloped, we apply infrastructure charge credits against X above.

## APPENDICES

### APPENDIX C – CALCULATING INFRASTRUCTURE CHARGES AND THE RELEVANT MULTIPLIER



On sites formerly occupied by non-household buildings, we will take into consideration the previous water demand and sewage discharged from the site in the five years prior to the new development to calculate the credit. The previous demand will be assessed from historical consumption records where they exist. In instances where there is no consumption history, we may consider the number of water fittings that were previously installed in the properties that existed prior to the redevelopment.

The amount of infrastructure charges credit given will be no less than the total number of household and non-household premises benefiting from a direct or indirect connection to our networks on the site at any time in the period of five years before the development or redevelopment began.

#### The Relevant Multiplier

To calculate the relevant multiplier, the total number of water fittings in all the categories specified in column 1 below is calculated by reference to the loading units in column 2 for the total aggregate loading units. This figure is divided by 24 and the resulting number will be the relevant multiplier, provided that where the resulting number is less than 1, the relevant multiplier will be 1.

Column 1 Water Fittings – see a) below	Column 2 Loading Units
WC flushing cistern	2
Wash basin - in a house	1.5
Wash basin - elsewhere	3
Bath	
tap nominal size 3/4in/20mm	10
tap nominal size larger than 3/4in/20mm	22
Shower	3
Sink	
tap nominal size 1/2in/15mm	3
tap nominal size larger than 1/2in/15mm	5
Spray tap	0.5
Bidet	1.5
Household appliances subject to a minimum of 6 loading units per house - see b) below	3
Communal or commercial appliance	10
Any other water fitting or outlet (including a tap but excluding a urinal or water softener)	3

## APPENDICES

### APPENDIX C – CALCULATING INFRASTRUCTURE CHARGES AND THE RELEVANT MULTIPLIER



Notes to be read with the table on previous page:

- a) Reference to any fitting includes reference to any plumbing, outlet, dedicated space or planning or other provision for that fitting.
- b) In any calculation under the paragraph a) a minimum of six loading units shall be included, in respect of each house, for household appliances (whether or not the House has any such appliances) except, in the case of any house, where neither a washing machine nor a dishwasher can be provided (and there is no plumbing, outlet, dedicated space or planning or other provision for either appliance) in the house.

In the case of premises with a sewerage only connection and no water fittings, the relevant multiplier will be one.

#### The Relevant Multiplier for Caravans

In the case of caravans, infrastructure charges will be based on the net increase in the number of caravans on the site and the use of a relevant multiplier based on loading units set out below:

	Standard House	Caravan
WC Flushing Cistern	2	1.5 (small)
Wash basin	1.5	1.5
Bath	10	0
Shower	0	3
Sink	3	3
Bidet	1.5	0
Household appliances	6	3
Site facility	0	3
Total	24	15

The relevant multiplier on the infrastructure charge applicable for each caravan is therefore calculated as  $15/24 = 62.5\%$  of the standard charge.

## APPENDICES

### APPENDIX D - WATER MAINS DESIGN CRITERIA



Number of individual dwellings	Typical Pipe Outside Diameter (PE Pipes)	Nominal Bore (Other Materials)
2-20	63 mm	50 mm
20-40	90 mm	80 mm
40-95	110/125 mm	100 mm
95-300	160/180 mm	150 mm
300-700	250 mm	225 mm



## Introduction

The following worked examples will help customers to calculate a reasonable estimate of our charges relating to site specific works. In the examples we have included:

- Requisition charges – relating to the work we do when constructing new water mains/sewers
- Connection charges – relating to the work we do when connecting properties to our new or existing network
- Infrastructure charges
- Income offset, if applicable

We have also included the other charges that are relevant to the scenarios. These include, but are not limited to:

- Application fees
- Design fees
- Administration fees
- Meter installation fees
- Fees to determine Water Regulations compliance
- Traffic management fees and local authority permit fees (where not already included in our charges)<sup>8</sup>
- Pre-occupancy fees

The worked examples are calculated in accordance with Ofwat's requirements<sup>9</sup>. In the examples, where we are required to provide water mains, the requirement is for us to provide our costs for us to excavate the ground and then to reinstate it once installation is complete. Customers' usual preference is to excavate the ground themselves in advance of installation.

It is the case that our customers prefer a) to construct lateral drains and connect to our sewers and b) to construct new sewers and offer them to us for adoption. As a consequence, our worked examples do not include for us constructing sewerage assets.

The examples are for illustrative purposes only. In all of the examples the following assumptions have been made:

- The development sites have not been developed previously, such that no infrastructure charge credits apply
- None of the houses are eligible for discounts for water efficiency or sustainable drainage

---

<sup>8</sup> Fees for 2-way traffic lights and local authority permit fees are included in our relevant charges for the connection of new mains and service connections to existing mains. The cost of hiring, setting up and dismantling of 2-way lights and the local authority permit fees for work in the highway are included. In all of the worked examples in this Appendix, we consider that there are no additional traffic management fees or local authority charges that are applicable.

<sup>9</sup> Ofwat Information notice IN 20/07 October 2020



## APPENDICES

### APPENDIX E – WORKED EXAMPLES



- No circumstances exist such that any of the connection services would be exempt from fixed upfront charges (see Appendix B)
- That sewer connections will be made directly to our existing public sewer network
- The fees and charges are exclusive of VAT

For the Northumbrian area, we have shown all of the water and wastewater fees and charges that typically apply to the development types in the examples. In that way, customers can see the expected total bill for connecting the development to our water and wastewater networks.

For the Essex & Suffolk area, we have shown all of the water fees and charges that typically apply to the development types in the examples. The wastewater charges and fees which may apply will be payable to the relevant sewerage undertaker in the area which the development is situated. Wastewater infrastructure charges are collected by us on behalf of Thames Water where we are the water supplier.

Where our examples include for the adoption of sewers an additional fee is payable that is not been included within our calculation. The fee is 2.5% of our estimate of the construction costs of the sewers or a minimum of £500. The fee includes for the following:

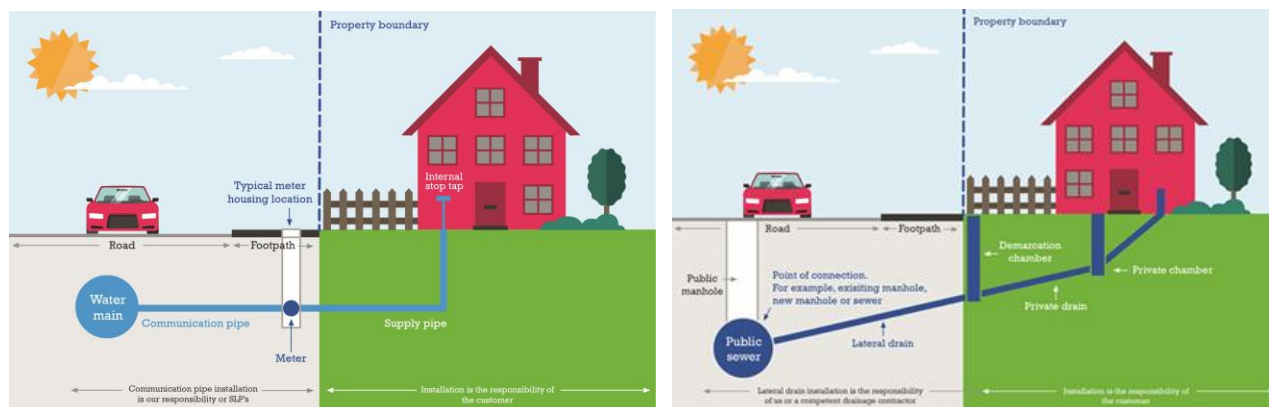
- Inspection and testing (including CCTV) of the self-laid sewers
- Provision of a maintenance certificate
- Issue of a final sewer adoption certificate

# APPENDICES

## APPENDIX E – WORKED EXAMPLES



### Example 1a– Single property connecting to our networks - short water service connection



The customer asked us to provide a new 25 mm diameter polyethylene service connection to an existing water main in a nearby road. The length of the service connection is 4 metres and we are required to excavate and reinstate the made-up surface of the highway. The connection requires us to have 2-way traffic lights in place for two days and we are required to pay the local authority a permit fee for working in the highway. The customer intends to construct two lateral drains which they are not asking us to adopt (one for surface water and one for foul sewage) and make two connections onto the existing public sewers in the nearby road.

Charge item	Length or Quantity	Unit	Rate NW	Charge NW	Rate ESW	Charge ESW
Service connection application fee	1	no.	£116	£116	£116	£116
Service connection administration fee	1	no.	£165	£165	£165	£165
Water Regulations compliance fee	1	no.	£66	£66	£66	£66
25 mm diameter PE service connection, 2 to 5m in length, in made up ground	1	no.	£737	£737	£1,205	£1,205
Pre-occupancy charge	1	no.	£32	£32	£21	£21
Water infrastructure charge	1	no.	£65	£65	£40	£40
Sewer connection application fee	1	no.	£201	£201		
Sewer connection administration fee	1	no.	£106	£106		
Wastewater infrastructure charge	1	no.	£235	£235		
Income offset	1	no.	£0	£0	£0	£0
			NW	£1,723	ESW	£1,613

## APPENDICES

### APPENDIX E – WORKED EXAMPLES



#### Example 1b Single property connecting to our networks - long water service connection

This example is the same as 1a except the water service connection is longer. The length of the service connection is 8 metres (4 metres in a made up surface and 4 metres in unmade ground). We are required to excavate and reinstate both the made-up surface and the unmade ground. The connection requires us to have 2-way traffic lights in place for two days and we are required to pay the local authority a permit fee for working in the highway. The customer intends to construct two lateral drains which they are not asking us to adopt (one for surface water and one for foul sewage) and make two connections onto the existing public sewers in the nearby road.

Charge item	Length or Quantity	Unit	Rate NW	Charge NW	Rate ESW	Charge ESW
Service connection application fee	1	no.	£116	£116	£116	£116
Service connection administration fee	1	no.	£165	£165	£165	£165
Water Regulations compliance fee	1	no.	£66	£66	£66	£66
25 mm diameter PE connection, 5 to 10m in length, in made up ground	1	no.	£1,181	£1,181	£1,757	£1,757
Pre-occupancy charge	1	no.	£32	£32	£21	£21
Water infrastructure charge	1	no.	£65	£65	£40	£40
Sewer connection application fee	1	no.	£106	£106		
Sewer connection administration fee	1	no.	£201	£201		
Wastewater infrastructure charge	1	no.	£235	£235		
Income offset	1	no.	£0	£0	£0	£0
			NW	£2,167	ESW	£2,165

## APPENDICES

### APPENDIX E – WORKED EXAMPLES



#### Example 2a – Block of flats connecting to our networks – short water service connection

The customer is building a block of flats comprising 10 units. They have asked us to provide a new 63 mm diameter service connection to an existing water main in a nearby road. The service connection needs to be constructed in barrier pipe, is 4 metres in length and we are required to excavate and reinstate the made-up surface. We will construct ten branch connections from the 63 mm pipe so that each flat has its own service pipe and meter. The meters will be housed in boundary boxes/chambers external to the block of flats. The 63 mm diameter connection requires us to have 2-way traffic lights in place for two days and we are required to pay the local authority a permit fee for working in the highway. The customer intends to construct two lateral drains which they are not asking us to adopt (one for surface water and one for foul sewage) and make two connections onto the existing public sewers in the nearby road.

Charge item	Length or Quantity	Unit	Rate NW	Charge NW	Rate ESW	Charge ESW
Service connection application fee	1	no.	£116	£116	£116	£116
Service connection administration fee	1	no.	£165	£165	£165	£165
Administration fee - service connection made at the same time as another service connection	9	no.	£39	£351	£39	£351
Water Regulations compliance fee (connection >32mm dia. domestic water fittings)	1	no.	£408	£408	£408	£408
63 mm diameter PE service connection, 2 to 5m in length, in made up ground	1	no.	£1,106	£1,106	£1,436	£1,436
Chlorination and pressure test of 63 mm diameter service connection	1	no.	£266	£266	£266	£266
Branch service connection	10	no.	£193	£1,930	£217	£2,170
Pre-occupancy charge	10	no.	£32	£320	£21	£210
Water infrastructure charge	10	no.	£65	£650	£40	£400
Sewer connection application fee	1	no.	£106	£106		
Sewer connection administration fee	1	no.	£201	£201		
Wastewater infrastructure charge	10	no.	£235	£2,350		
Income offset	10	no.	£0	£0	£0	£0
			NW	£7,969	ESW	£5,522

## APPENDICES

### APPENDIX E – WORKED EXAMPLES



#### Example 2b – Block of flats connecting to our networks – long water service connection

This example is the same as 2a except the water service connection is longer. The length of the service connection is 8 metres (4 metres in a made up surface and 4 metres in unmade ground). We are required to excavate and reinstate both the made-up surface and the unmade ground. We will construct ten branch connections from the 63 mm pipe so that each flat has its own service pipe and meter. The meters will be housed in boundary boxes/chambers external to the block of flats. The 63 mm diameter connection requires us to have 2-way traffic lights in place for two days and we are required to pay the local authority a permit fee for working in the highway. The customer intends to construct two lateral drains (one for surface water and one for foul sewage) and make two connections onto the existing public sewers in the nearby road.

Charge item	Length or Quantity	Unit	Rate NW	Charge NW	Rate ESW	Charge ESW
Service connection application fee	1	no.	£116	£116	£116	£116
Service connection administration fee	1	no.	£165	£165	£165	£165
Administration fee - service connection made at the same time as another service connection	9	no.	£39	£351	£39	£351
Water Regulations compliance fee (connection >32mm dia. domestic water fittings)	1	no.	£408	£408	£408	£408
63 mm diameter PE service connection, 5 to 10m in length, in made up ground	1	no.	£1,636	£1,636	£2,104	£2,104
Chlorination and pressure test of 63 mm diameter service connection	1	no.	£266	£266	£266	£266
Branch service connection	10	no.	£193	£1,930	£217	£2,170
Pre-occupancy charge	10	no.	£32	£320	£21	£210
Water infrastructure charge	10	no.	£65	£650	£40	£400
Sewer connection application fee	1	no.	£106	£106		
Sewer connection administration fee	1	no.	£201	£201		
Wastewater infrastructure charge	10	no.	£235	£2,350		
Income offset	10	no.	£0	£0	£0	£0
			NW	£8,499	ESW	£6,190

## APPENDICES

### APPENDIX E – WORKED EXAMPLES



#### Example 3 – Small housing development

The customer is building 10 new houses. They have asked us to design and construct new water mains and service connections for them. The service connections are 3m in length in unmade ground. The new water mains total 50 metres in length, consisting of:

- 10 metres of 90 millimetre diameter PE in road surface
- 20 metres of 90 millimetre diameter PE in unmade surface
- 20 metres of 63 millimetre diameter PE in unmade surface

To connect the new mains to our existing network requires us to have 2-way traffic lights in place for two days and we are required to pay the local authority a permit fee for working in the highway. The customer intends to construct two sewers (one for surface water and one for foul sewage) and make two connections onto the existing public sewers in the nearby road. The new sewers are to be designed and constructed by the customer and offered to us for adoption.

Charge item	Length or Quantity	Unit	Rate NW	Charge NW	Rate ESW	Charge ESW
Water mains application fee (valid POC)	1	no.	£104	£104	£104	£104
Mains design fee for up to 20 properties	1	no.	£375	£375	£375	£375
Mains administration fee	1	no.	£448	£448	£448	£448
Supply and construct 90 mm diameter PE water main - in made up ground	10	m	£161	£1,610	£218	£2,180
Supply and construct 90 mm diameter PE water main - in unmade ground	20	m	£65	£1,300	£89	£1,780
Supply and construct 63 mm diameter PE water main - in unmade ground	20	m	£55	£1,100	£73	£1,460
Service connection administration fee	10	no.	£49	£490	£49	£490
Water Regulations compliance fee (self-certified)	10	no.	£23	£230	£23	£230
Supply and install 25 mm service connection 2 to 5m in length in unmade ground	10	no.	£445	£4,450	£586	£5,860
Pre-occupancy charges	10	no.	£32	£320	£21	£210
Water Infrastructure charge	10	no.	£65	£650	£40	£400
Sewer connection application fee	1	no.	£106	£106		
Sewer connection administration fee	1	no.	£201	£201		
Sewer adoption application fee (includes initial administration)	1	no.	£500	£500		
Sewer adoption legal fee (provision of a standard sewer adoption agreement)	1	no.	£220	£220		
Wastewater infrastructure charge	10	no.	£235	£2,350		
Income offset	10	no.	£0	£0	£0	£0
			NW	£14,454	ESW	£13,537

## APPENDICES

### APPENDIX E – WORKED EXAMPLES



#### Example 4 – Medium housing development

The customer is building 50 new houses. They have asked us to design and construct new water mains and service connections for them. The service connections are 3m in length in unmade ground. The new water mains total 300 metres in length, consisting of:

- 10 metres of 180 millimetre diameter PE in road surface
- 90 metres of 180 millimetre diameter PE in unmade surface
- 100 metres of 125 millimetre diameter PE in unmade surface
- 100 metres of 90 millimetre diameter PE in unmade surface

To connect the new mains to our existing network requires us to have 2-way traffic lights in place for two days and we are required to pay the local authority a permit fee for working in the highway. The customer intends to construct two sewers (one for surface water and one for foul sewage) and make two connections onto the existing public sewers in the nearby road. The new sewers are to be designed and constructed by the customer and offered to us for adoption.

Charge item	Length or Quantity	Unit	Rate NW	Charge NW	Rate ESW	Charge ESW
Water mains application fee (valid POC)	1	no.	£104	£104	£104	£104
Mains design fee for up to 20 properties	1	no.	£375	£375	£375	£375
Mains design fee for additional multiples of 20 properties	2	no.	£448	£136	£68	£136
Mains administration fee	1	no.	£448	£448	£448	£448
Supply and construct 180 mm diameter PE water main - in made up ground	10	m	£199	£1,990	£267	£2,670
Supply and construct 180 mm diameter PE water main - in unmade ground	90	m	£90	£8,100	£111	£9,990
Supply and construct 125 mm diameter PE water main - in unmade ground	100	m	£69	£6,900	£100	£10,000
Supply and construct 90 mm diameter PE water main - in unmade ground	100	m	£65	£6,500	£89	£8,900
Service connection administration fee	50	no.	£49	£2,450	£49	£2,450
Water Regulations compliance fee (self-certified)	50	no.	£23	£1,150	£23	£1,150
Supply and install 25 mm service connection 2 to 5m in length in unmade ground	50	no.	£579	£22,250	£586	£29,300
Pre-occupancy charges	50	no.	£32	£1,600	£21	£1,050
Water Infrastructure charge	50	no.	£65	£3,250	£40	£2,000
Sewer connection application fee	1	no.	£106	£106		
Sewer connection administration fee	1	no.	£201	£201		
Sewer adoption application fee (includes initial administration)	1	no.	£500	£500		
Sewer adoption legal fee (provision of a standard sewer adoption agreement)	1	no.	£220	£220		
Wastewater infrastructure charge	50	no.	£235	£11,750		
Income offset	50	no.	£0	£0	£0	£0
			NW	£68,030	ESW	£68,573

## APPENDICES

### APPENDIX E – WORKED EXAMPLES



#### Example 5 – Large housing development

The customer is building 200 new houses. They have asked us to design and construct new water mains and service connections for them. The service connections are 3m in length in unmade ground. The new water mains total 1000 metres in length, consisting of:

- 10 metres of 180 millimetre diameter PE in road surface
- 290 metres of 180 millimetre diameter PE in unmade ground
- 300 metres of 125 millimetre diameter PE in unmade ground
- 400 metres of 90 millimetre diameter PE in unmade ground

To connect the new mains to our existing network requires us to have 2-way traffic lights in place for two days and we are required to pay the local authority a permit fee for working in the highway. The customer intends to construct two sewers (one for surface water and one for foul sewage) and make two connections onto the existing public sewers in the nearby road. The new sewers are to be designed and constructed by the customer and offered to us for adoption.

Charge item	Length or Quantity	Unit	Rate NW	Charge NW	Rate ESW	Charge ESW
Water mains application fee (valid POC)	1	no.	£104	£104	£104	£104
Mains design fee for up to 20 properties	1	no.	£375	£375	£375	£375
Mains design fee for additional multiples of 20 properties	9	no.	£68	£612	£68	£612
Mains administration fee	1	no.	£448	£448	£448	£448
Supply and construct 180 mm diameter PE water main - in made up ground	10	m	£199	£1,990	£267	£2,670
Supply and construct 180 mm diameter PE water main - in unmade ground	290	m	£90	£26,100	£111	£32,190
Supply and construct 125 mm diameter PE water main - in unmade ground	300	m	£69	£20,700	£100	£30,000
Supply and construct 90 mm diameter PE water main - in unmade ground	400	m	£65	£26,000	£89	£35,600
Service connection administration fee	200	no.	£49	£9,800	£49	£9,800
Water Regulations compliance fee (self-certified)	200	no.	£23	£4,600	£23	£4,600
Supply and install 25 mm service connection 2 to 5m in length in unmade ground	200	no.	£445	£89,000	£586	£117,200
Pre-occupancy charges	200	no.	£32	£6,400	£21	£4,200
Water Infrastructure charge	200	no.	£65	£13,000	£40	£8,000
Sewer connection application fee	1	no.	£106	£106		
Sewer connection administration fee	1	no.	£201	£201		
Sewer adoption application fee (includes initial administration)	1	no.	£220	£220		
Sewer adoption legal fee (provision of a standard sewer adoption agreement)	1	no.	£500	£500		
Wastewater infrastructure charge	200	no.	£235	£47,000		
Income offset	200	no.	£0	£0	£0	£0
			NW	£247,156	ESW	£245,799



## APPENDICES

### APPENDIX E – WORKED EXAMPLES



#### Example 6a– Small housing development where mains and services are self-laid

The customer is building 10 new houses. They have asked an SLP design and construct new water mains and service connections for them. The service connections are 3m in length in unmade ground. The new water mains total 50 metres in length, consisting of:

- 10 metres of 90 millimetre diameter PE in made up ground excavated by the customer
- 20 metres of 90 millimetre diameter PE in unmade ground excavated by the customer
- 20 metres of 63 millimetre diameter PE in unmade ground excavated by the customer

To connect the new mains to our existing network requires us to have 2-way traffic lights in place for two days and we are required to pay the local authority a permit fee for working in the highway. The customer intends to construct two sewers (one for surface water and one for foul sewage) and make two connections onto the existing public sewers in the nearby road. The new sewers are to be designed and constructed by the customer and offered to us for adoption.

Charge item	Length or Quantity	Unit	Rate NW	Charge NW	Rate ESW	Charge ESW
Water mains application fee (valid POC)	1	no.	£104	£104	£104	£104
Mains design approval fee	1	no.	£198	£198	£198	£198
Self lay administration fee	1	no.	£333	£333	£333	£333
Self lay legal fee	1	no.	£58	£58	£58	£58
Connection of self laid main to existing water mains	1	no.	£1,963	£1,963	£2,634	£2,634
Self laid service connection administration fee	20	no.	£35	£700	£35	£700
Water Regulations compliance fee (self-certified)	20	no.	£23	£460	£23	£460
Charge for the provision of meters for SLPs to collect and install	20	no.	£46	£920	£46	£920
Pre-occupancy charges	20	no.	£32	£640	£21	£420
Water infrastructure charge	20	no.	£65	£1,300	£40	£800
Wastewater infrastructure charge	20	no.	£235	£4,700		
Sewer connection application fee	1	no.	£106	£106		
Sewer connection administration fee	1	no.	£201	£201		
Sewer adoption application fee (includes initial administration)	1	no.	£500	£500		
Sewer adoption legal fee (provision of a standard sewer adoption agreement)	1	no.	£220	£220		
Income offset	20	no.	£0	£0	£0	£0
			NW	£12,403	ESW	£6,627

## APPENDICES

### APPENDIX E – WORKED EXAMPLES



#### Example 6b– Medium housing development where mains and services are self-laid

The customer is building 50 new houses. They have asked an SLP design and construct new water mains and service connections for them. The service connections are 3m in length in unmade ground. The new water mains total 300 metres in length, consisting of:

- 10 metres of 180 millimetre diameter PE in made up ground excavated by the customer
- 90 metres of 180 millimetre diameter PE in unmade ground excavated by the customer
- 100 metres of 125 millimetre diameter PE in unmade ground excavated by the customer
- 100 metres of 90 millimetre diameter PE in unmade ground excavated by the customer

To connect the new mains to our existing network requires us to have 2-way traffic lights in place for two days and we are required to pay the local authority a permit fee for working in the highway. The customer intends to construct two sewers (one for surface water and one for foul sewage) and make two connections onto the existing public sewers in the nearby road. The new sewers are to be designed and constructed by the customer and offered to us for adoption.

Charge item	Length or Quantity	Unit	Rate NW	Charge NW	Rate ESW	Charge ESW
Water mains application fee (valid POC)	1	no.	£104	£104	£104	£104
Mains design approval fee	1	no.	£198	£198	£198	£198
Self lay administration fee	1	no.	£333	£333	£333	£333
Self lay legal fee	1	no.	£58	£58	£58	£58
Connection of self laid main to existing water mains	1	no.	£2,213	£2,213	£2,945	£2,945
Self laid service connection administration fee	50	no.	£35	£1,750	£35	£1,750
Water Regulations compliance fee (self-certified)	50	no.	£23	£1,150	£23	£1,150
Charge for the provision of meters for SLPs to collect and install	50	no.	£46	£2,300	£46	£2,300
Pre-occupancy charges	50	no.	£32	£1,600	£21	£1,050
Water Infrastructure charge	50	no.	£65	£3,250	£40	£2,000
Wastewater infrastructure charge	50	no.	£235	£11,750		
Sewer connection application fee	1	no.	£106	£106		
Sewer connection administration fee	1	no.	£201	£201		
Sewer adoption application fee (includes initial administration)	1	no.	£500	£500		
Sewer adoption legal fee (provision of a standard sewer adoption agreement)	1	no.	£220	£220		
Income offset	50	no.	£0	£0	£0	£0
			NW	£25,733	ESW	£11,888

## APPENDICES

### APPENDIX E – WORKED EXAMPLES



#### Example 6c– Large housing development where mains and services are self-laid

The customer is building 200 new houses. They have asked an SLP design and construct new water mains and service connections for them. The service connections are 3m in length in unmade ground. The new water mains total 1000 metres in length, consisting of:

- 10 metres of 180 millimetre diameter PE in made up ground excavated by the customer
- 290 metres of 180 millimetre diameter PE in unmade ground excavated by the customer
- 300 metres of 125 millimetre diameter PE in unmade ground excavated by the customer
- 400 metres of 90 millimetre diameter PE in unmade ground excavated by the customer

To connect the new mains to our existing network requires us to have 2-way traffic lights in place for two days and we are required to pay the local authority a permit fee for working in the highway. The customer intends to construct two sewers (one for surface water and one for foul sewage) and make two connections onto the existing public sewers in the nearby road. The new sewers are to be designed and constructed by the customer and offered to us for adoption.

Charge item	Length or Quantity	Unit	Rate NW	Charge NW	Rate ESW	Charge ESW
Water mains application fee (valid POC)	1	no.	£104	£104	£104	£104
Mains design approval fee	1	no.	£198	£198	£198	£198
Self lay administration fee	1	no.	£333	£333	£333	£333
Self lay legal fee	1	no.	£58	£58	£58	£58
Connection of self laid main to existing water mains	1	no.	£2,213	£2,213	£2,945	£2,945
Self laid service connection administration fee	200	no.	£35	£7,000	£35	£7,000
Water Regulations compliance fee (self-certified)	200	no.	£23	£4,600	£23	£4,600
Charge for the provision of meters for SLPs to collect and install	200	no.	£46	£9,200	£46	£9,200
Pre-occupancy charges	200	no.	£32	£6,400	£21	£4,200
Water Infrastructure charge	200	no.	£65	£13,000	£40	£8,000
Wastewater infrastructure charge	200	no.	£235	£47,000		
Sewer connection application fee	1	no.	£106	£106		
Sewer connection administration fee	1	no.	£201	£201		
Sewer adoption application fee (includes initial administration)	1	no.	£500	£500		
Sewer adoption legal fee (provision of a standard sewer adoption agreement)	1	no.	£220	£220		
Income offset	200	no.	£0	£0	£0	£0
			NW	£91,133	ESW	£36,638